



United States Congress

# Joint Economic Committee

Est. 1946

Republicans

Representative David Schweikert, *Chairman*



## Missouri Employment Update



April 2025 | Released May 21, 2025

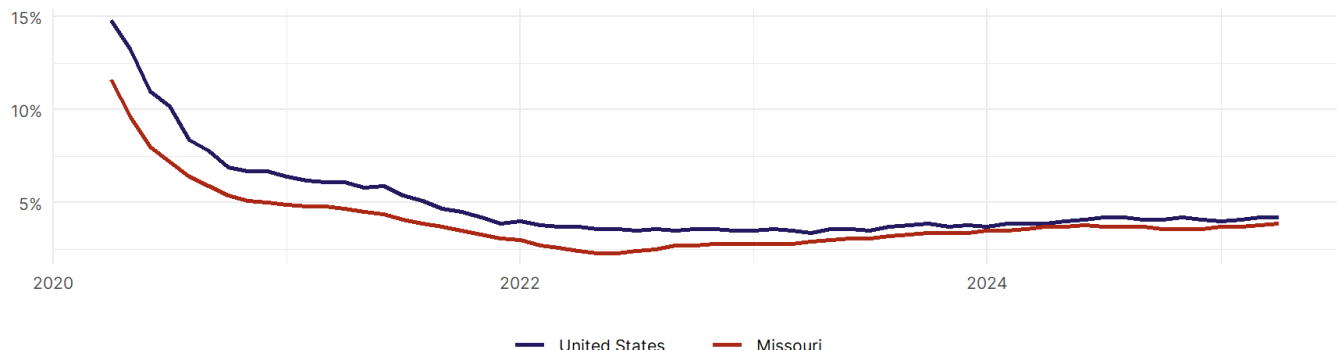
### United States Employment Snapshot

- In April, among the 50 states and the District of Columbia **unemployment fell in 5, rose in 20, and remained unchanged in 26.**
- The highest unemployment rate was 5.8 percent in **District of Columbia**, and the lowest was 1.8 percent in **South Dakota**. Nationally, the unemployment rate remained unchanged in April.
- In April, **payroll jobs rose in 40 states and fell in 11.** The largest payroll job percent increase was 0.4 percent in **Mississippi**. The largest payroll job percent decline was 0.2 percent in **Vermont**.

### Missouri Employment Snapshot

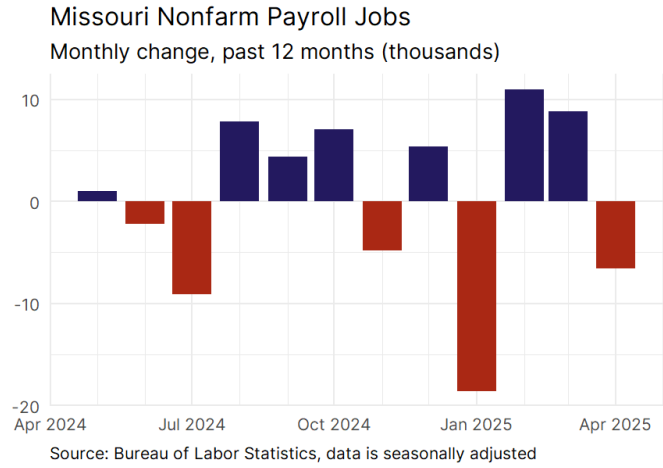
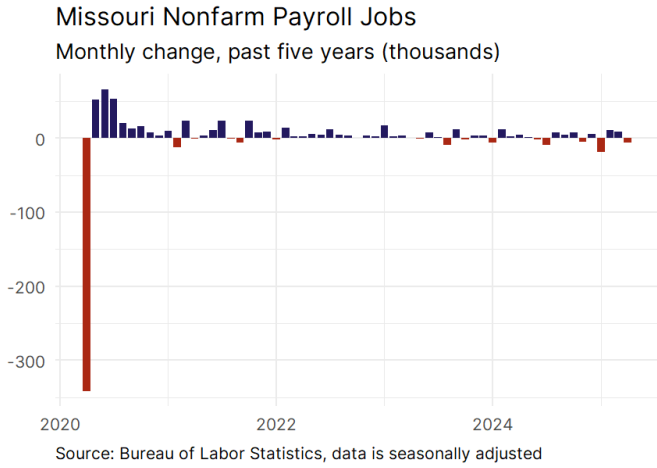
- In April, **Missouri lost 6,600 net payroll jobs** and the **unemployment rate rose by 0.1 percentage point to 3.9 percent.** In the prior month, Missouri added 8,800 net payroll jobs.
- Over the past 12 months, **Missouri added 4,200 net payroll jobs** and the **unemployment rate rose by 0.2 percentage points from 3.7 percent.**
- Nationally, nonfarm payrolls **rose by 177,000 in April, or 0.1 percent.** Missouri **ranks 48th** in the nation for percentage gain in nonfarm payroll employment over the past 12 months.
- In April, **Missouri's private sector lost 6,900 net private payroll jobs**, and over the past 12 months it lost 800 private payroll jobs. In the prior month, Missouri added 9,800 net private payroll jobs.
- In April, employment in Missouri **rose by 2,025**, and over the past 12 months it rose by 21,105.
- **Missouri's labor force participation rate remained steady at 63.4 percent** in April and **ranks 24th** in the nation. In the past 12 months, the labor force participation rate has risen by 0.1 percentage points.

Missouri  
Unemployment Rate

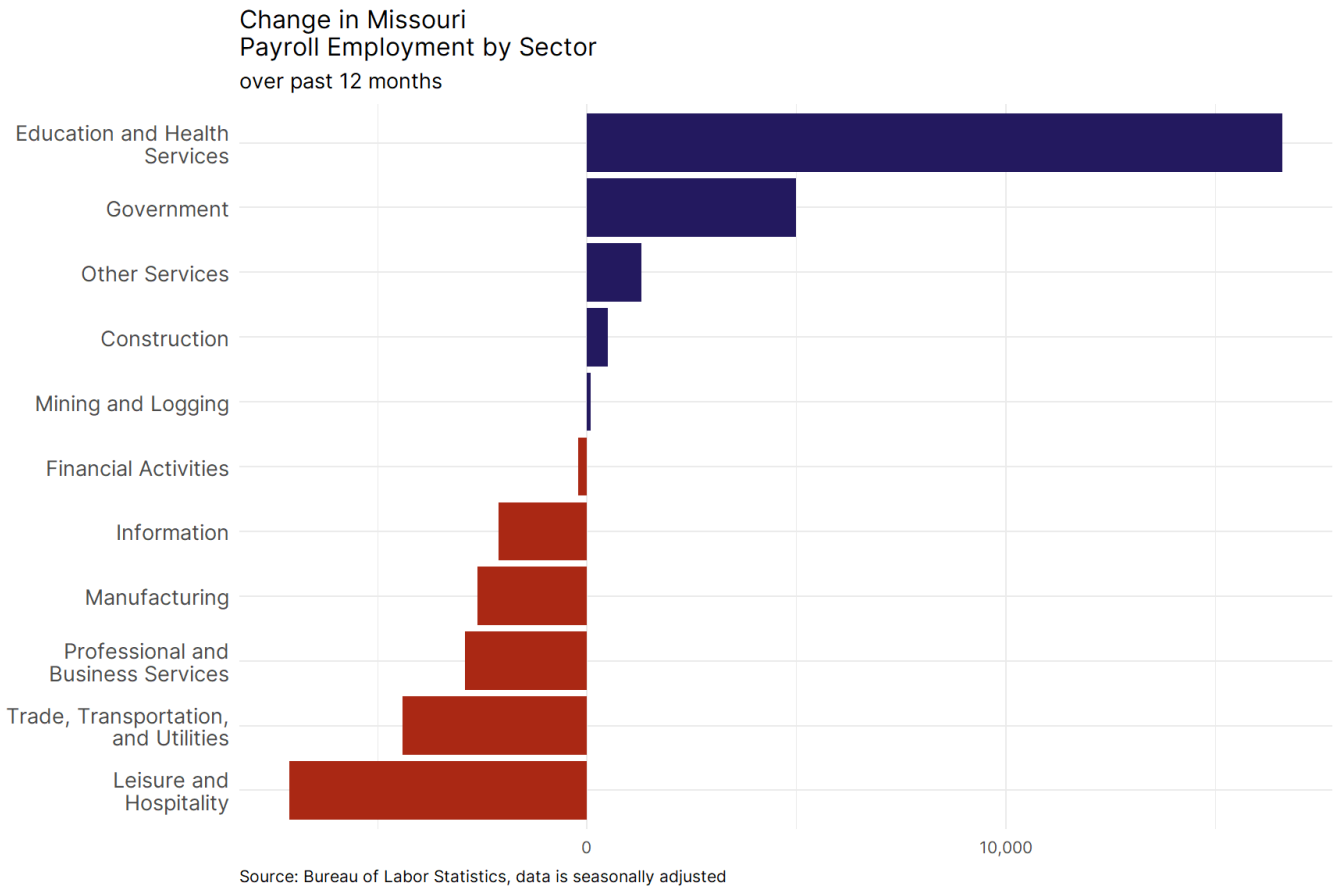


Source: Bureau of Labor Statistics, data is seasonally adjusted

## Missouri Payroll Employment



- **Missouri lost 6,600 net payroll jobs, or -0.2 percent,** on a seasonally adjusted basis during April. In the prior month, Missouri added 8,800 jobs. Missouri nonfarm payroll employment has increased in **7 of the past 12 months.**
- Nationally, nonfarm payrolls **rose by 177,000 in April, or 0.1 percent.** Missouri ranks 48th in the nation for percentage gain in nonfarm payroll employment over the past 12 months.
- **Missouri lost 6,900 private sector jobs, or -0.3 percent,** on a seasonally adjusted basis during April. In the prior month, Missouri added 9,800 jobs. Missouri private sector payroll employment has increased in **8 of the past 12 months.**
- Nationally, private sector payroll jobs **rose by 167,000 jobs in April, or 0.1 percent.** Missouri ranks 49th in the nation for percentage gain in private sector payroll employment over the past 12 months.



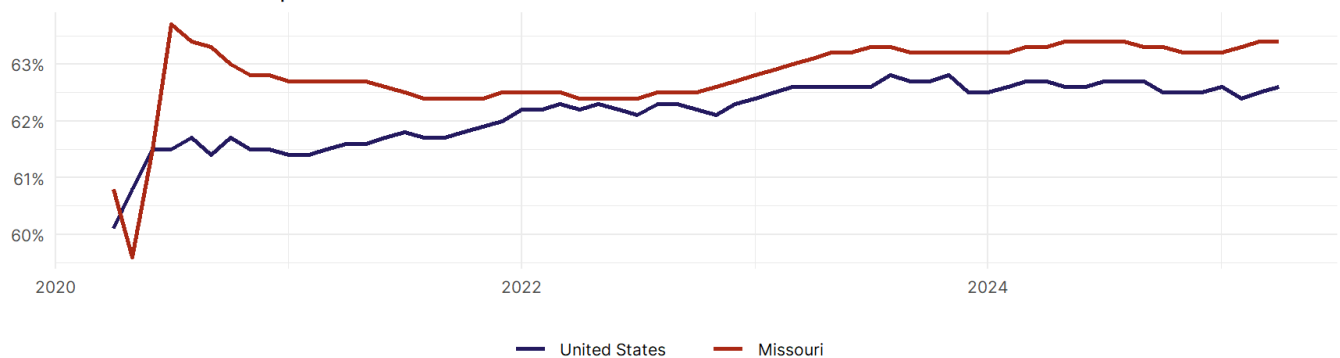
- The best performing sectors on a seasonally adjusted basis during April were **Government (300)** and **Education and Health Services (200)**.
- The poorest performing sectors during the month were **Trade, Transportation, and Utilities (-1,100)** and **Leisure and Hospitality (-1,800)**.
- The best performing sectors during the last 12 months were **Education and Health Services (16,600)** and **Government (5,000)**.
- The poorest performing sectors during the last 12 months were **Trade, Transportation, and Utilities (-4,400)** and **Leisure and Hospitality (-7,100)**.

### Missouri Labor Force

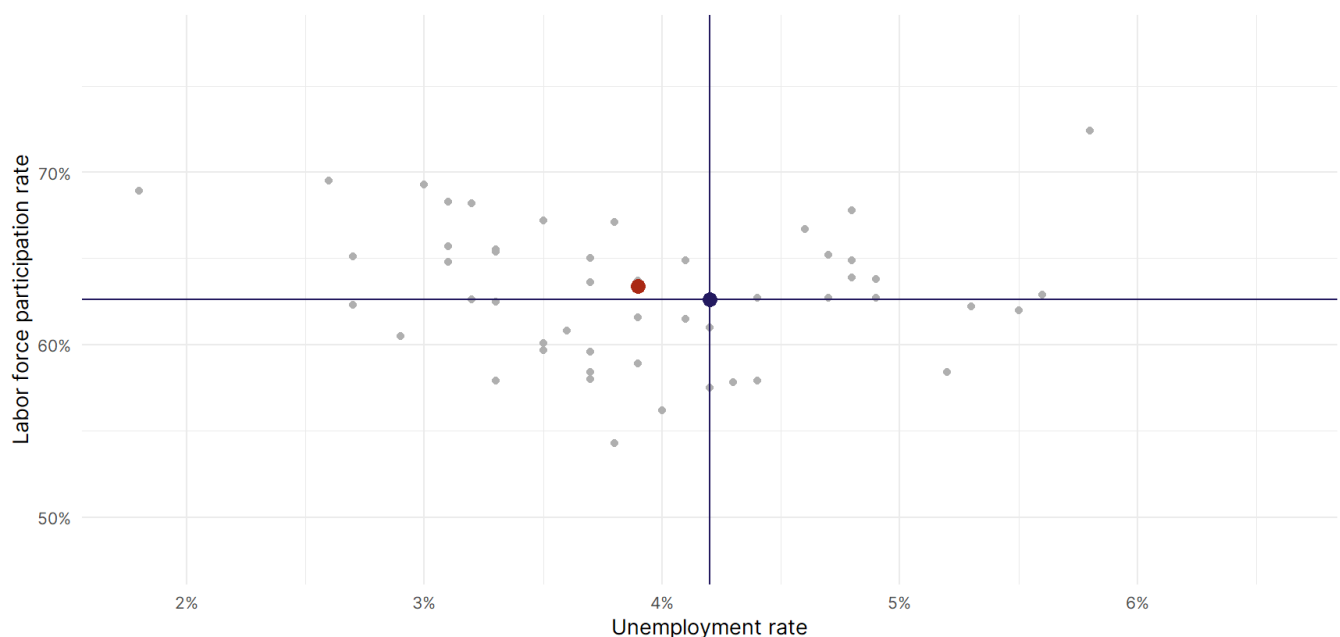
The labor force participation rate is the percentage of the civilian noninstitutionalized population age 16 and older who are employed or actively looking for work.

- The labor force participation rate in **Missouri remained unchanged at 63.4 percent in April**.
- **Missouri ranks 24th** in the nation.
- The 10-year high for the labor force participation rate in Missouri was **64.7 percent** occurring in August 2016, and the 10-year low was **59.6 percent** in May 2020.
- The national labor force participation rate **rose by 0.1 percentage points to 62.6 percent** in April.

Missouri  
Labor Force Participation Rate



Source: Bureau of Labor Statistics, data is seasonally adjusted



Source: Bureau of Labor Statistics, data is seasonally adjusted