



United States Congress

Joint Economic Committee

Est. 1946

Republicans

Representative David Schweikert, *Chairman*



Montana Employment Update



April 2025 | Released May 21, 2025

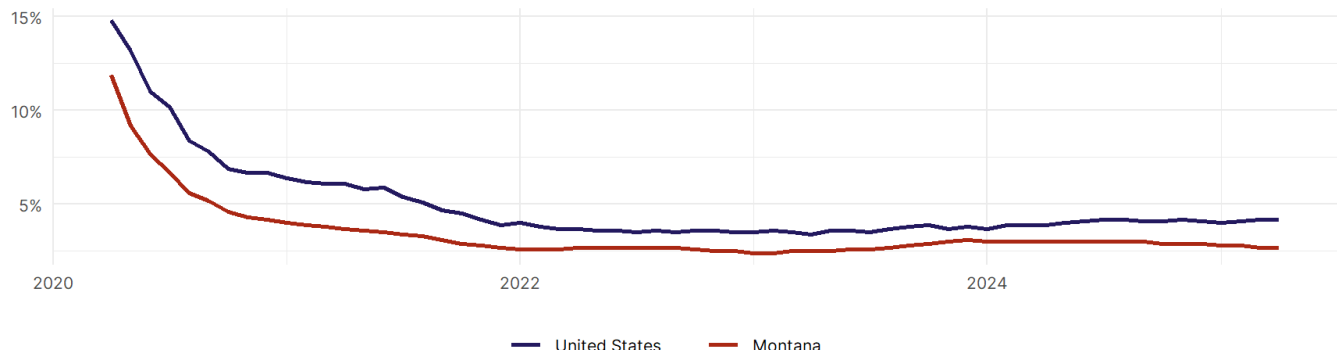
United States Employment Snapshot

- In April, among the 50 states and the District of Columbia **unemployment fell in 5, rose in 20, and remained unchanged in 26.**
- The highest unemployment rate was 5.8 percent in **District of Columbia**, and the lowest was 1.8 percent in **South Dakota**. Nationally, the unemployment rate remained unchanged in April.
- In April, **payroll jobs rose in 40 states and fell in 11.** The largest payroll job percent increase was 0.4 percent in **Mississippi**. The largest payroll job percent decline was 0.2 percent in **Vermont**.

Montana Employment Snapshot

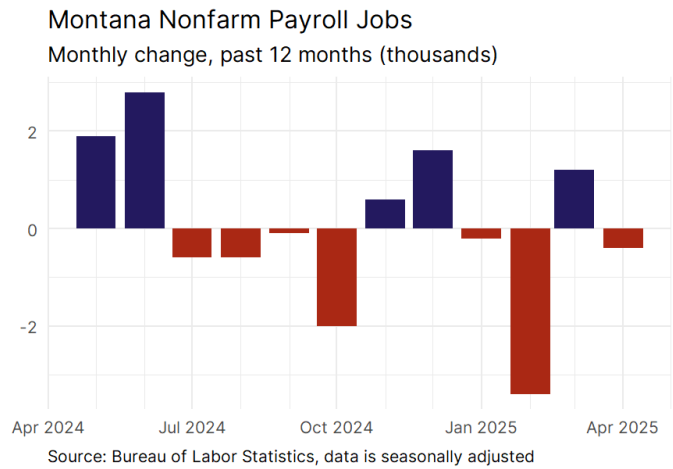
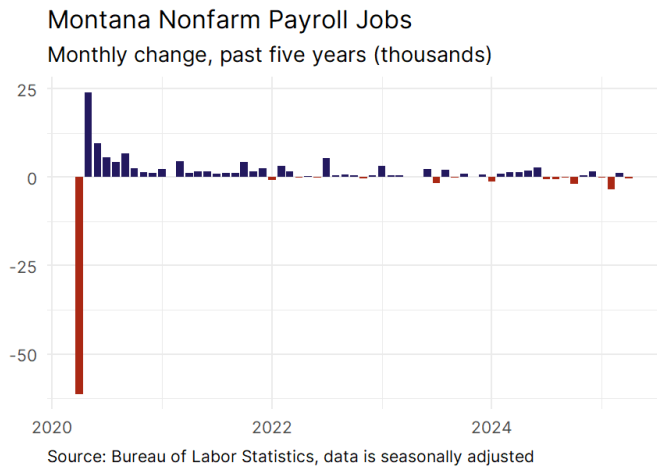
- In April, **Montana lost 400 net payroll jobs** and the **unemployment rate remained unchanged at 2.7 percent.** In the prior month, Montana added 1,200 net payroll jobs.
- Over the past 12 months, **Montana added 800 net payroll jobs** and the **unemployment rate fell by 0.3 percentage points from 3 percent.**
- Nationally, nonfarm payrolls **rose by 177,000 in April, or 0.1 percent.** Montana **is tied for 45th** in the nation for percentage gain in nonfarm payroll employment over the past 12 months.
- In April, **Montana's private sector lost 300 net private payroll jobs**, and over the past 12 months it added 800 private payroll jobs. In the prior month, Montana added 1,100 net private payroll jobs.
- In April, employment in Montana **fell by 614**, and over the past 12 months it fell by 1,959.
- **Montana's labor force participation rate fell to 62.3 percent** in April from 62.4 percent and **ranks 31st** in the nation. In the past 12 months, the labor force participation rate has fallen by 0.9 percentage points.

Montana
Unemployment Rate

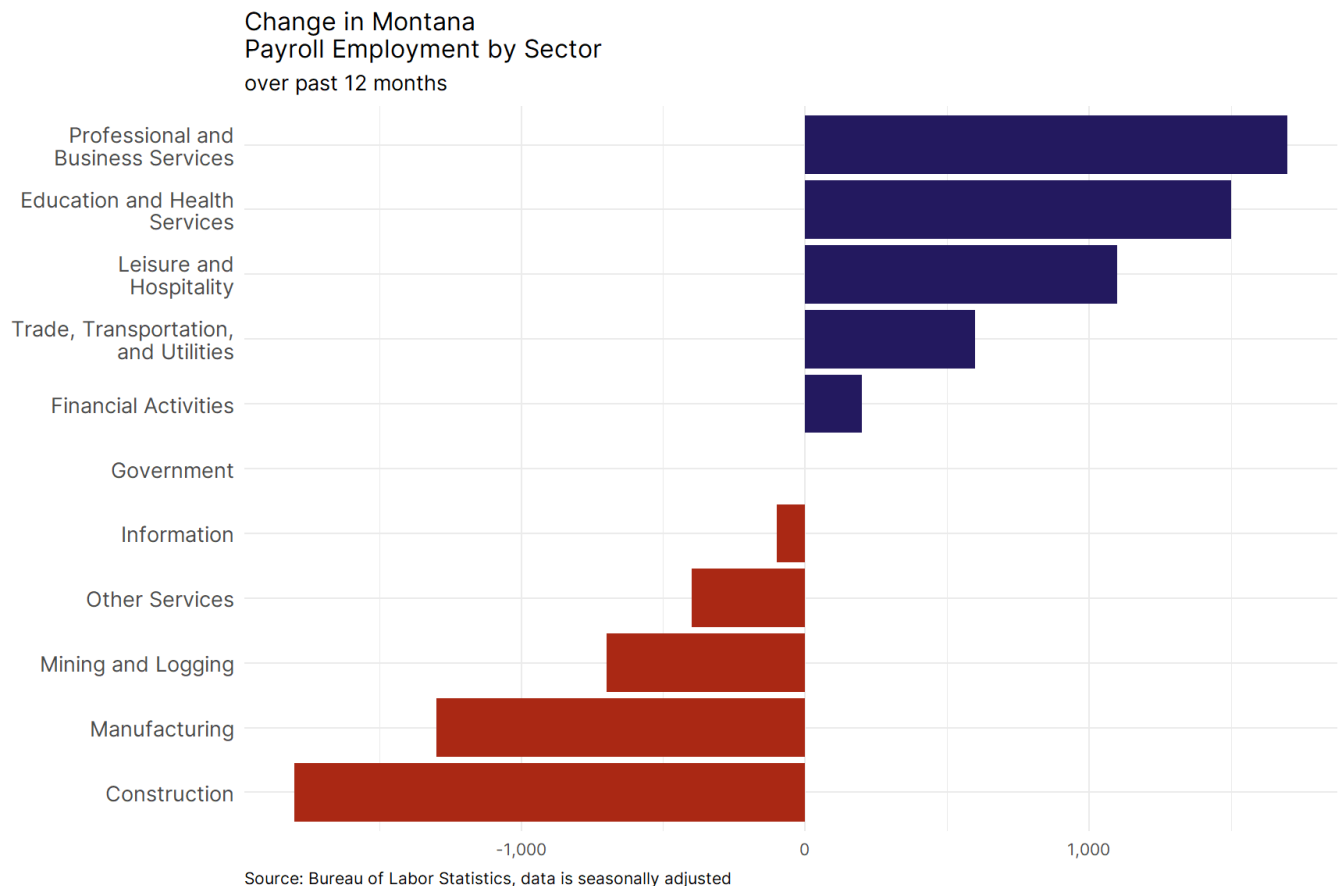


Source: Bureau of Labor Statistics, data is seasonally adjusted

Montana Payroll Employment



- **Montana lost 400 net payroll jobs, or -0.1 percent**, on a seasonally adjusted basis during April. In the prior month, Montana added 1,200 jobs. Montana nonfarm payroll employment has increased in **5 of the past 12 months**.
- Nationally, nonfarm payrolls **rose by 177,000 in April, or 0.1 percent**. Montana is tied for 45th in the nation for percentage gain in nonfarm payroll employment over the past 12 months.
- **Montana lost 300 private sector jobs, or -0.1 percent**, on a seasonally adjusted basis during April. In the prior month, Montana added 1,100 jobs. Montana private sector payroll employment has increased in **4 of the past 12 months**.
- Nationally, private sector payroll jobs **rose by 167,000 jobs in April, or 0.1 percent**. Montana ranks 44th in the nation for percentage gain in private sector payroll employment over the past 12 months.



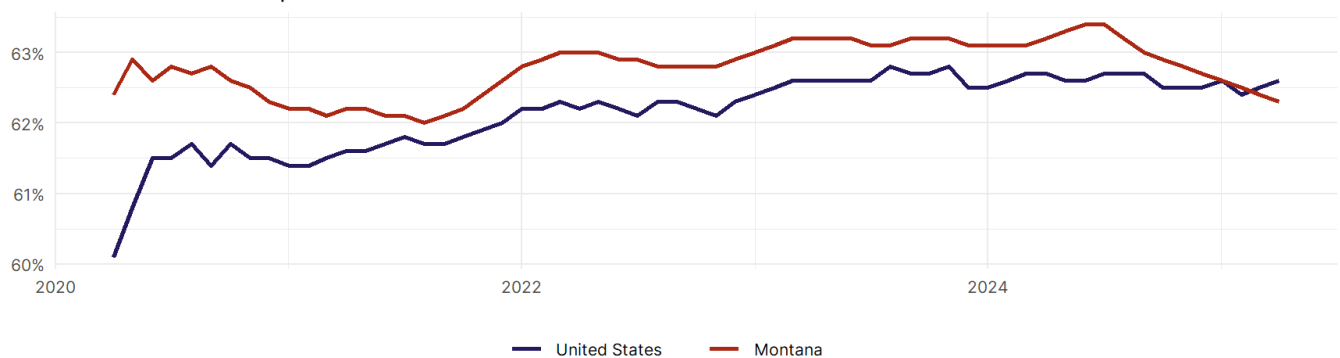
- The best performing sectors on a seasonally adjusted basis during April were **Trade, Transportation, and Utilities tied with Education and Health Services (600)** and **Professional and Business Services (300)**.
- The poorest performing sectors during the month were **Other Services (-400)** and **Leisure and Hospitality (-800)**.
- The best performing sectors during the last 12 months were **Professional and Business Services (1,700)** and **Education and Health Services (1,500)**.
- The poorest performing sectors during the last 12 months were **Manufacturing (-1,300)** and **Construction (-1,800)**.

Montana Labor Force

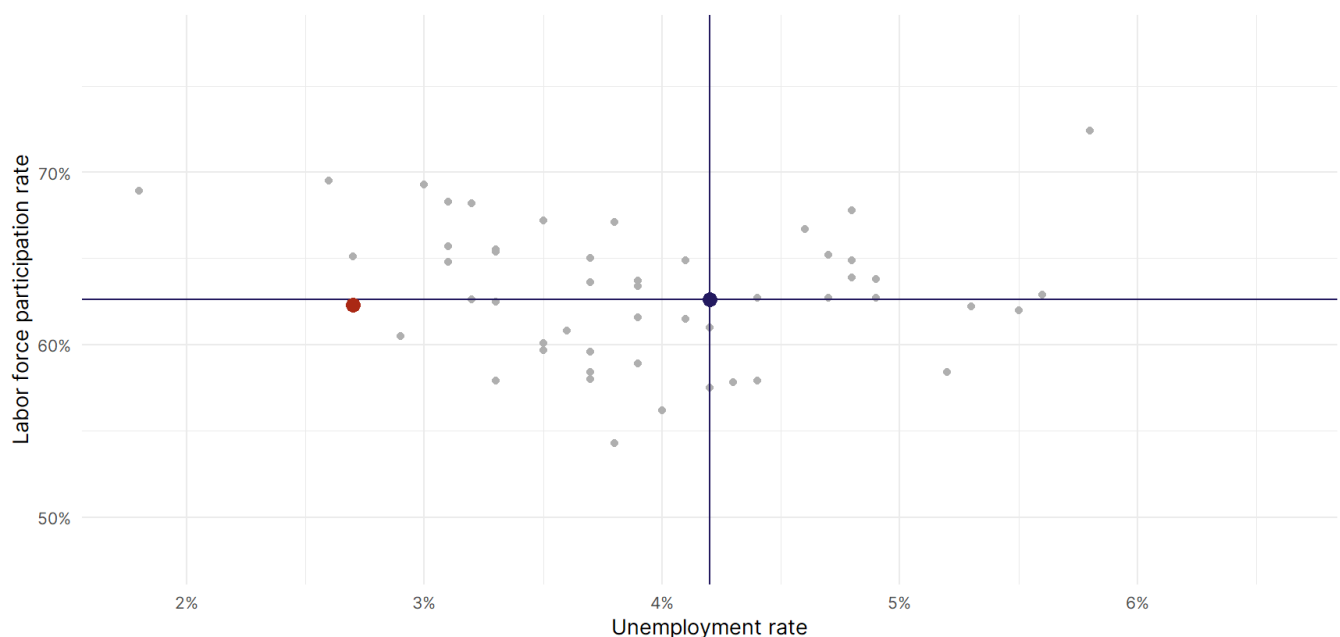
The labor force participation rate is the percentage of the civilian noninstitutionalized population age 16 and older who are employed or actively looking for work.

- The labor force participation rate in **Montana fell to 62.3 percent in April from 62.4 percent in the prior month.**
- **Montana ranks 31st** in the nation.
- The 10-year high for the labor force participation rate in Montana was **64 percent** occurring in December 2019, and the 10-year low was **62 percent** in August 2021.
- The national labor force participation rate **rose by 0.1 percentage points to 62.6 percent** in April.

Montana
Labor Force Participation Rate



Source: Bureau of Labor Statistics, data is seasonally adjusted



Source: Bureau of Labor Statistics, data is seasonally adjusted