



United States Congress

Joint Economic Committee

Est. 1946

Republicans

Representative David Schweikert, *Chairman*



Nevada

Employment Update



April 2025 | Released May 21, 2025

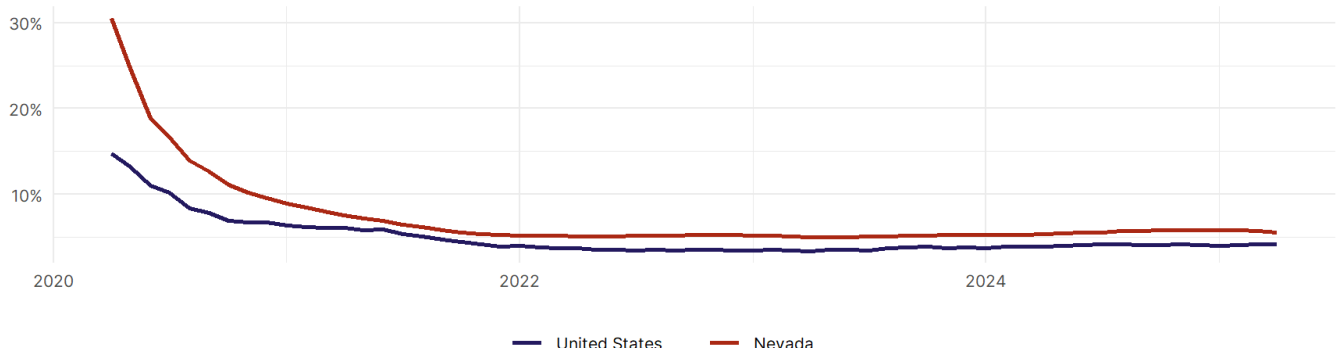
United States Employment Snapshot

- In April, among the 50 states and the District of Columbia **unemployment fell in 5, rose in 20, and remained unchanged in 26.**
- The highest unemployment rate was 5.8 percent in **District of Columbia**, and the lowest was 1.8 percent in **South Dakota**. Nationally, the unemployment rate remained unchanged in April.
- In April, **payroll jobs rose in 40 states and fell in 11.** The largest payroll job percent increase was 0.4 percent in **Mississippi**. The largest payroll job percent decline was 0.2 percent in **Vermont**.

Nevada Employment Snapshot

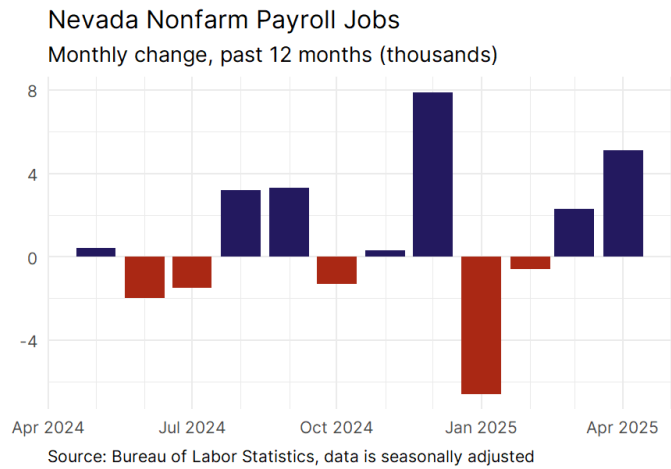
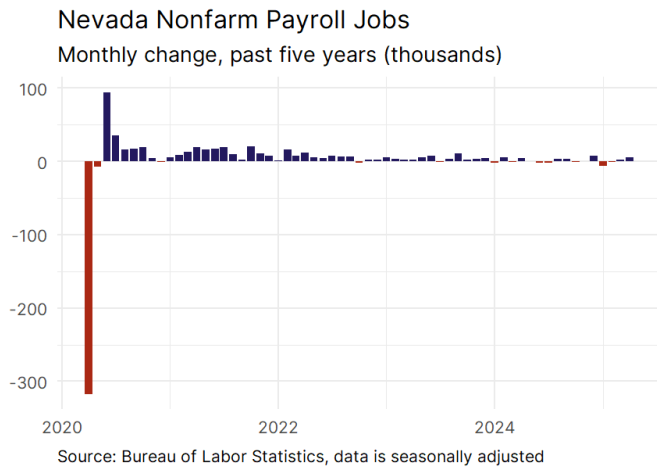
- In April, **Nevada added 5,100 net payroll jobs** and the **unemployment rate fell by 0.1 percentage point to 5.6 percent.** In the prior month, Nevada added 2,300 net payroll jobs.
- Over the past 12 months, **Nevada added 10,500 net payroll jobs** and the **unemployment rate rose by 0.2 percentage points from 5.4 percent.**
- Nationally, nonfarm payrolls **rose by 177,000 in April, or 0.1 percent.** Nevada **is tied for 35th** in the nation for percentage gain in nonfarm payroll employment over the past 12 months.
- In April, **Nevada's private sector added 5,100 net private payroll jobs**, and over the past 12 months it added 7,400 private payroll jobs. In the prior month, Nevada added 2,400 net private payroll jobs.
- In April, employment in Nevada **rose by 5,766**, and over the past 12 months it rose by 29,265.
- **Nevada's labor force participation rate rose to 62.9 percent** in April from 62.8 percent and **ranks 25th** in the nation. In the past 12 months, the labor force participation rate has risen by 0.2 percentage points.

Nevada
Unemployment Rate

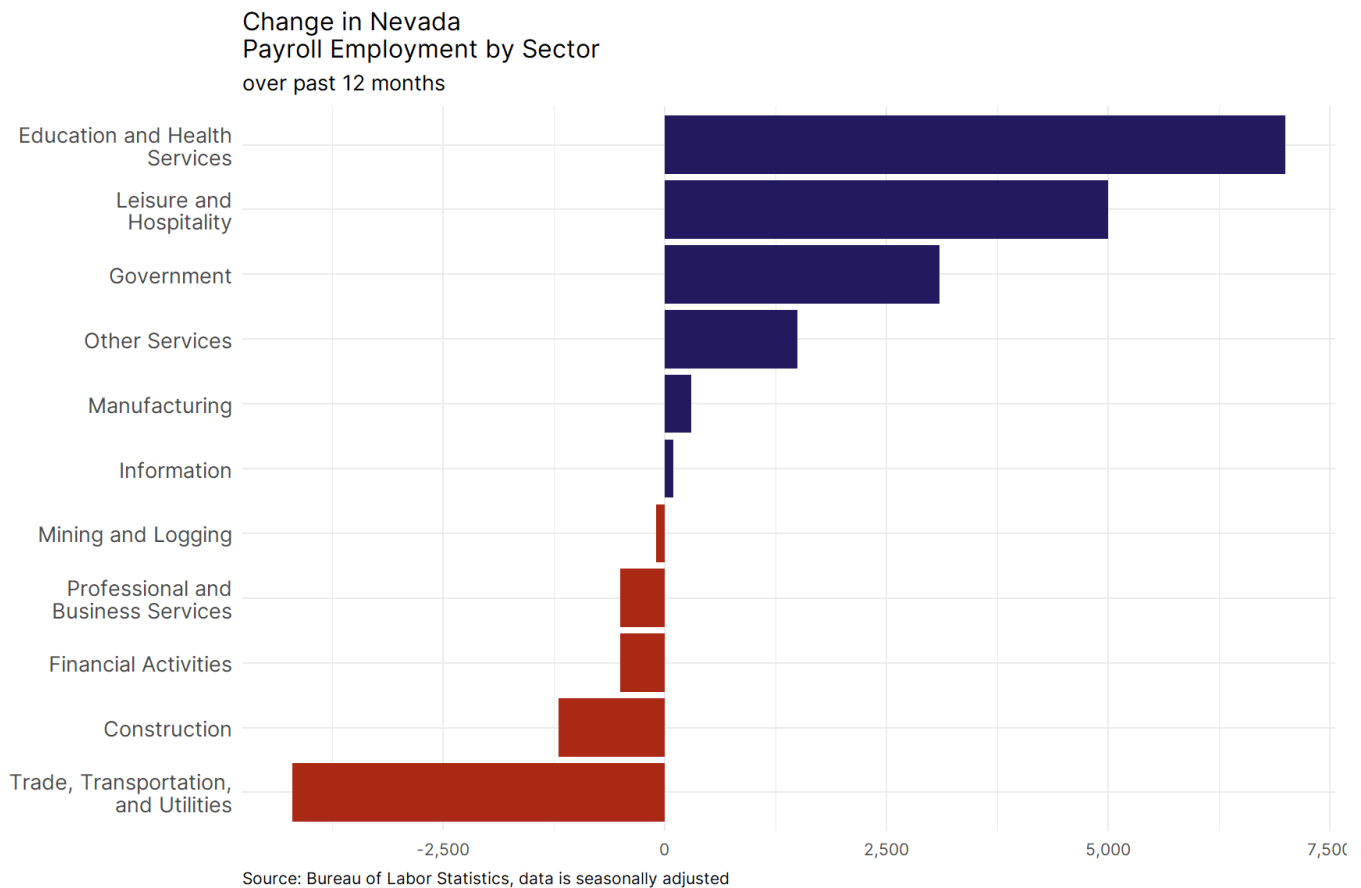


Source: Bureau of Labor Statistics, data is seasonally adjusted

Nevada Payroll Employment



- **Nevada added 5,100 net payroll jobs, or 0.3 percent,** on a seasonally adjusted basis during April. In the prior month, Nevada added 2,300 jobs. Nevada nonfarm payroll employment has increased in **7 of the past 12 months.**
- Nationally, nonfarm payrolls **rose by 177,000 in April, or 0.1 percent.** Nevada is tied for 35th in the nation for percentage gain in nonfarm payroll employment over the past 12 months.
- **Nevada added 5,100 private sector jobs, or 0.4 percent,** on a seasonally adjusted basis during April. In the prior month, Nevada added 2,400 jobs. Nevada private sector payroll employment has increased in **5 of the past 12 months.**
- Nationally, private sector payroll jobs **rose by 167,000 jobs in April, or 0.1 percent.** Nevada is tied for 37th in the nation for percentage gain in private sector payroll employment over the past 12 months.



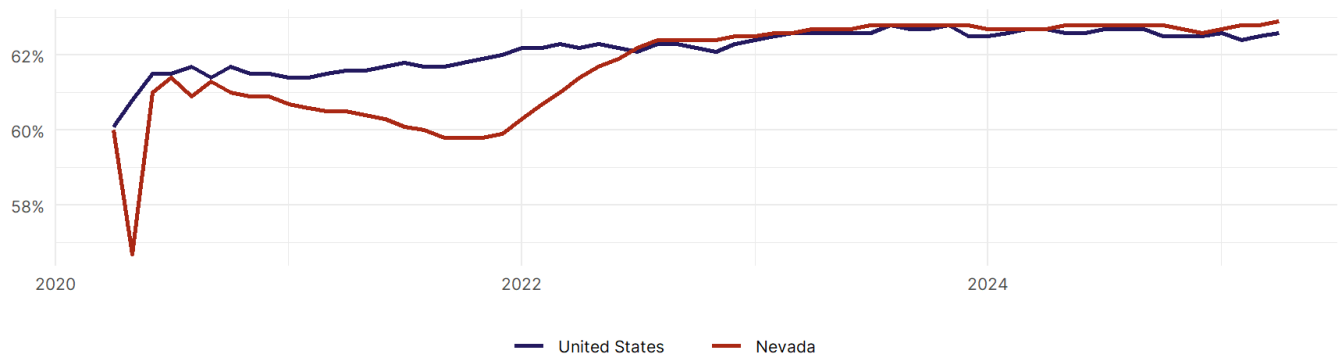
- The best performing sectors on a seasonally adjusted basis during April were **Leisure and Hospitality (3,200)** and **Professional and Business Services (1,900)**.
- The poorest performing sectors during the month were **Other Services (-300)** and **Construction (-1,400)**.
- The best performing sectors during the last 12 months were **Education and Health Services (7,000)** and **Leisure and Hospitality (5,000)**.
- The poorest performing sectors during the last 12 months were **Construction (-1,200)** and **Trade, Transportation, and Utilities (-4,200)**.

Nevada Labor Force

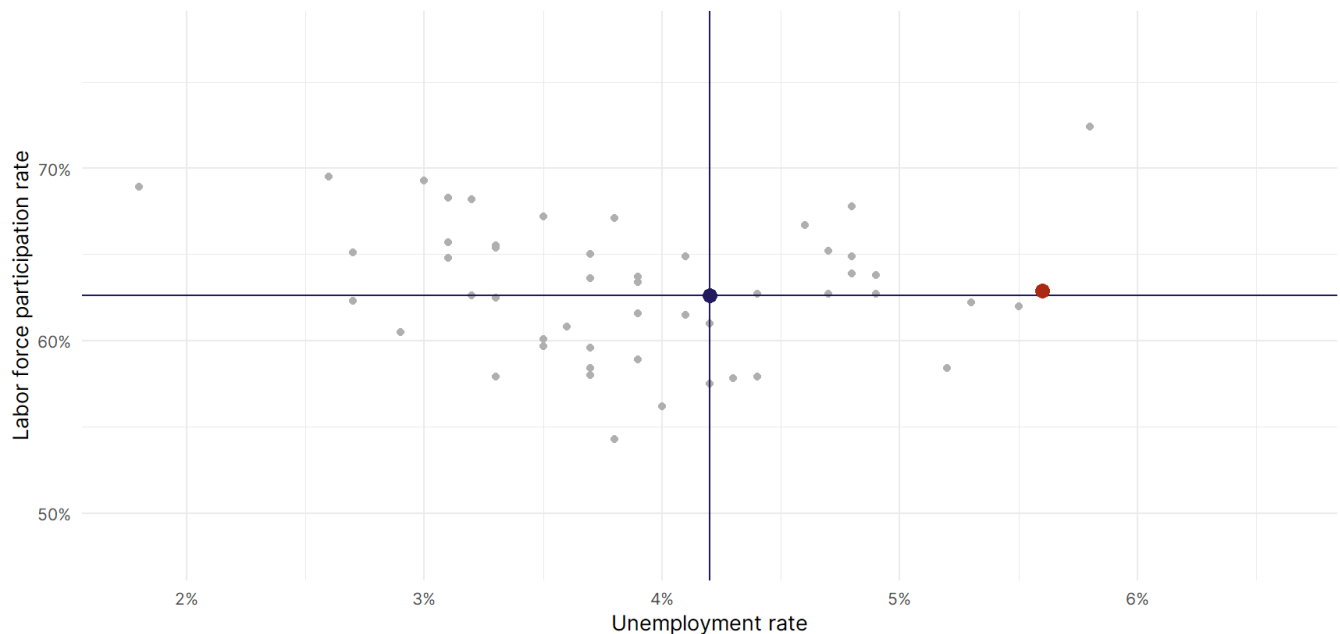
The labor force participation rate is the percentage of the civilian noninstitutionalized population age 16 and older who are employed or actively looking for work.

- The labor force participation rate in **Nevada rose to 62.9 percent in April from 62.8 percent in the prior month**.
- **Nevada ranks 25th** in the nation.
- The 10-year high for the labor force participation rate in Nevada was **64.4 percent** occurring in December 2019, and the 10-year low was **56.7 percent** in May 2020.
- The national labor force participation rate **rose by 0.1 percentage points to 62.6 percent** in April.

Nevada
Labor Force Participation Rate



Source: Bureau of Labor Statistics, data is seasonally adjusted



Source: Bureau of Labor Statistics, data is seasonally adjusted