



United States Congress

Joint Economic Committee

Est. 1946

Republicans

Representative David Schweikert, *Chairman*



New Jersey Employment Update



April 2025 | Released May 21, 2025

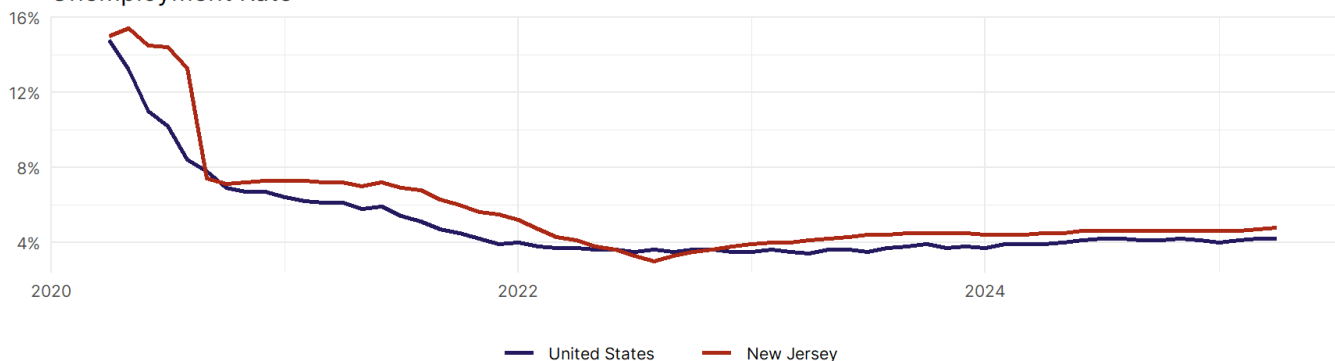
United States Employment Snapshot

- In April, among the 50 states and the District of Columbia **unemployment fell in 5, rose in 20, and remained unchanged in 26.**
- The highest unemployment rate was 5.8 percent in **District of Columbia**, and the lowest was 1.8 percent in **South Dakota**. Nationally, the unemployment rate remained unchanged in April.
- In April, **payroll jobs rose in 40 states and fell in 11.** The largest payroll job percent increase was 0.4 percent in **Mississippi**. The largest payroll job percent decline was 0.2 percent in **Vermont**.

New Jersey Employment Snapshot

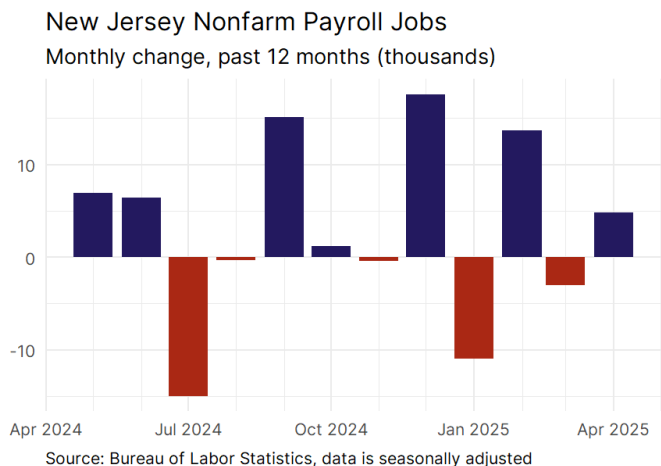
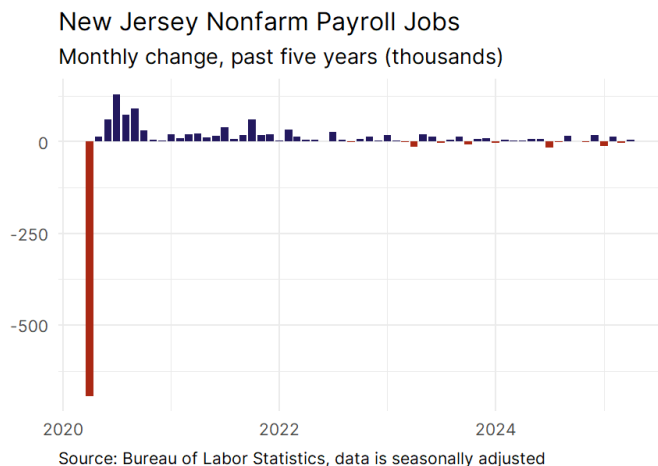
- In April, **New Jersey added 4,800 net payroll jobs** and the **unemployment rate rose by 0.1 percentage point to 4.8 percent.** In the prior month, New Jersey lost 3,000 net payroll jobs.
- Over the past 12 months, **New Jersey added 36,000 net payroll jobs** and the **unemployment rate rose by 0.3 percentage points from 4.5 percent.**
- Nationally, nonfarm payrolls **rose by 177,000 in April, or 0.1 percent.** New Jersey **is tied for 27th** in the nation for percentage gain in nonfarm payroll employment over the past 12 months.
- In April, **New Jersey's private sector added 3,600 net private payroll jobs**, and over the past 12 months it added 27,400 private payroll jobs. In the prior month, New Jersey lost 4,100 net private payroll jobs.
- In April, employment in New Jersey **fell by 2,857**, and over the past 12 months it fell by 11,352.
- **New Jersey's labor force participation rate remained steady at 63.9 percent** in April and **ranks 20th** in the nation. In the past 12 months, the labor force participation rate has fallen by 0.6 percentage points.

New Jersey
Unemployment Rate

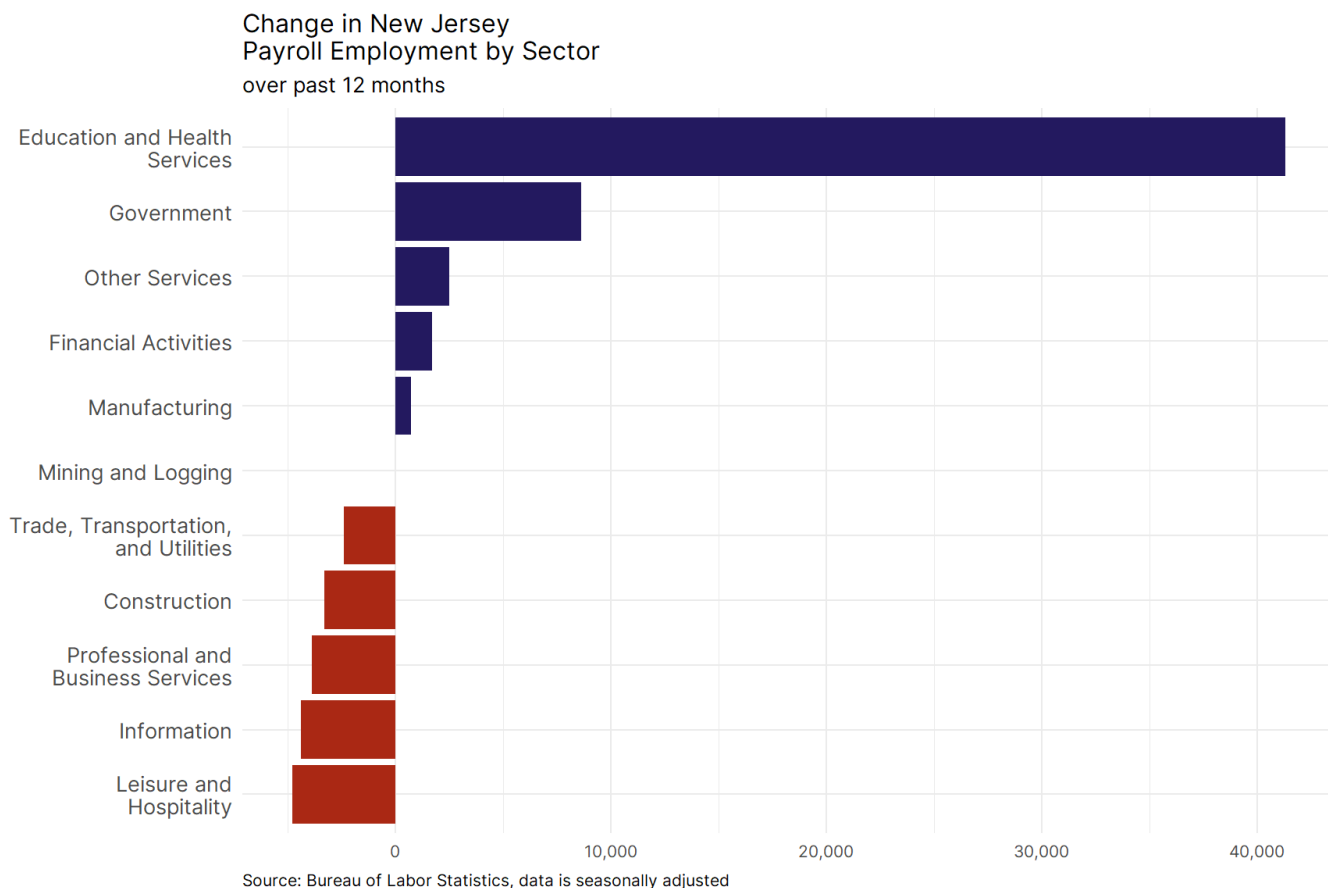


Source: Bureau of Labor Statistics, data is seasonally adjusted

New Jersey Payroll Employment



- **New Jersey added 4,800 net payroll jobs, or 0.1 percent,** on a seasonally adjusted basis during April. In the prior month, New Jersey lost 3,000 jobs. New Jersey nonfarm payroll employment has increased in **7 of the past 12 months**.
- Nationally, nonfarm payrolls **rose by 177,000 in April, or 0.1 percent**. New Jersey is tied for 27th in the nation for percentage gain in nonfarm payroll employment over the past 12 months.
- **New Jersey added 3,600 private sector jobs, or 0.1 percent,** on a seasonally adjusted basis during April. In the prior month, New Jersey lost 4,100 jobs. New Jersey private sector payroll employment has increased in **8 of the past 12 months**.
- Nationally, private sector payroll jobs **rose by 167,000 jobs in April, or 0.1 percent**. New Jersey is tied for 30th in the nation for percentage gain in private sector payroll employment over the past 12 months.

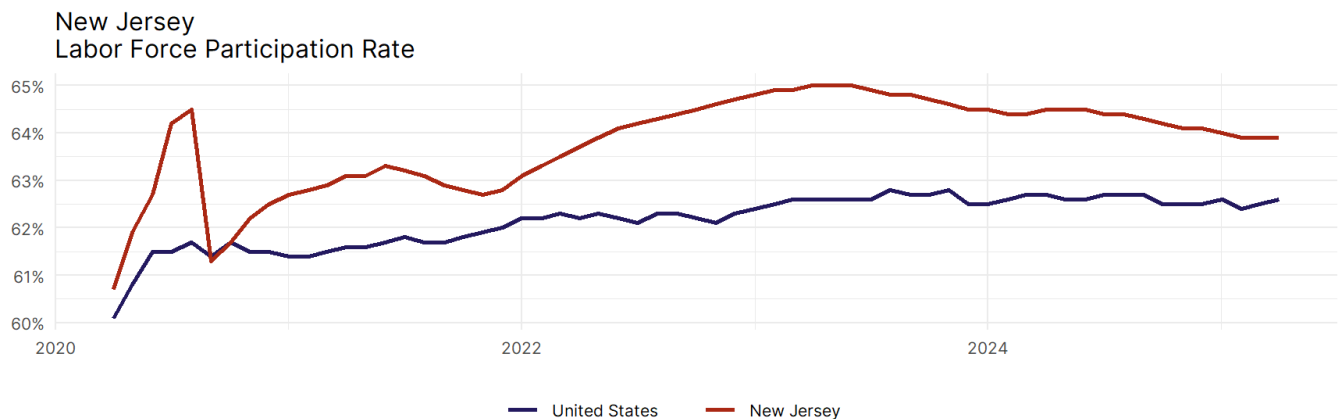


- The best performing sectors on a seasonally adjusted basis during April were **Education and Health Services (7,100)** and **Financial Activities (1,600)**.
- The poorest performing sectors during the month were **Professional and Business Services (-1,900)** and **Leisure and Hospitality (-2,800)**.
- The best performing sectors during the last 12 months were **Education and Health Services (41,300)** and **Government (8,600)**.
- The poorest performing sectors during the last 12 months were **Information (-4,400)** and **Leisure and Hospitality (-4,800)**.

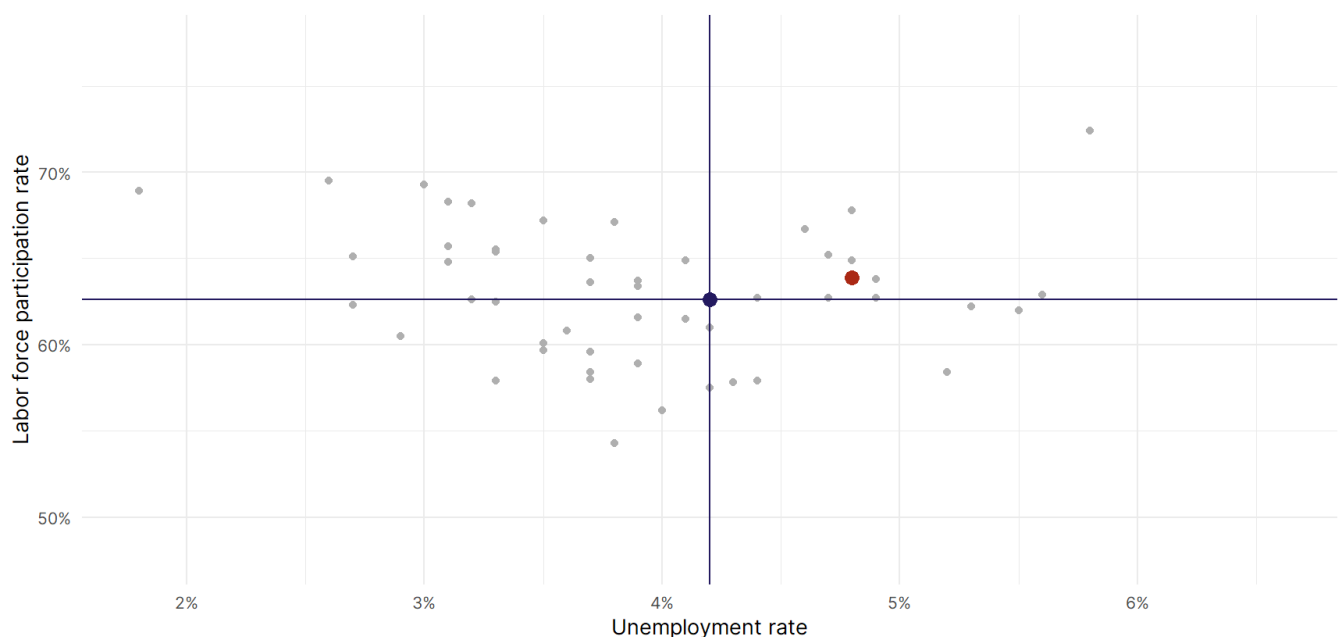
New Jersey Labor Force

The labor force participation rate is the percentage of the civilian noninstitutionalized population age 16 and older who are employed or actively looking for work.

- The labor force participation rate in **New Jersey remained unchanged at 63.9 percent in April**.
- **New Jersey ranks 20th** in the nation.
- The 10-year high for the labor force participation rate in New Jersey was **65 percent** occurring in June 2023, and the 10-year low was **60.7 percent** in April 2020.
- The national labor force participation rate **rose by 0.1 percentage points to 62.6 percent** in April.



Source: Bureau of Labor Statistics, data is seasonally adjusted



Source: Bureau of Labor Statistics, data is seasonally adjusted