



United States Congress

Joint Economic Committee

Est. 1946

Republicans

Representative David Schweikert, *Chairman*



Oklahoma Employment Update



April 2025 | Released May 21, 2025

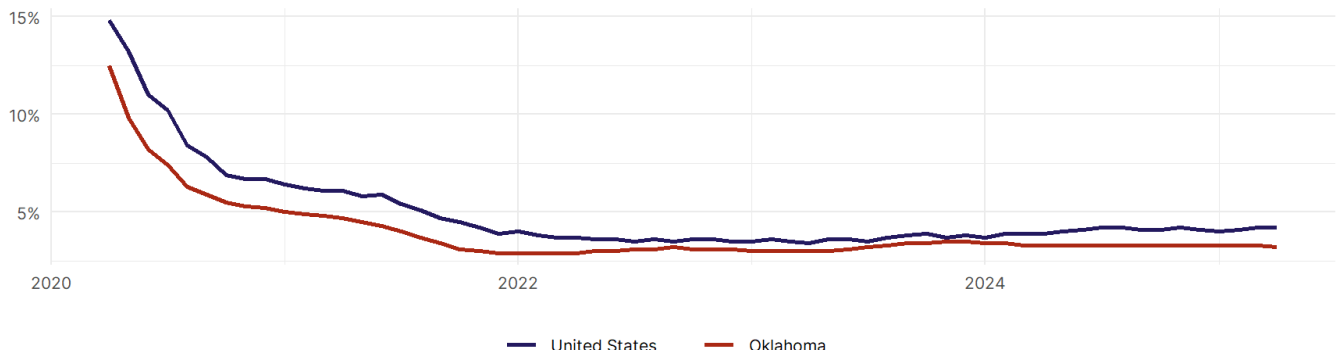
United States Employment Snapshot

- In April, among the 50 states and the District of Columbia **unemployment fell in 5, rose in 20, and remained unchanged in 26.**
- The highest unemployment rate was 5.8 percent in **District of Columbia**, and the lowest was 1.8 percent in **South Dakota**. Nationally, the unemployment rate remained unchanged in April.
- In April, **payroll jobs rose in 40 states and fell in 11.** The largest payroll job percent increase was 0.4 percent in **Mississippi**. The largest payroll job percent decline was 0.2 percent in **Vermont**.

Oklahoma Employment Snapshot

- In April, **Oklahoma added 2,900 net payroll jobs** and the **unemployment rate fell by 0.1 percentage point to 3.2 percent.** In the prior month, Oklahoma added 200 net payroll jobs.
- Over the past 12 months, **Oklahoma added 24,400 net payroll jobs** and the **unemployment rate fell by 0.1 percentage point from 3.3 percent.**
- Nationally, nonfarm payrolls **rose by 177,000 in April, or 0.1 percent.** Oklahoma **is tied for 10th** in the nation for percentage gain in nonfarm payroll employment over the past 12 months.
- In April, **Oklahoma's private sector added 2,200 net private payroll jobs**, and over the past 12 months it added 19,700 private payroll jobs. In the prior month, Oklahoma added 100 net private payroll jobs.
- In April, employment in Oklahoma **rose by 4,391**, and over the past 12 months it rose by 15,661.
- **Oklahoma's labor force participation rate remained steady at 62.6 percent** in April and **ranks 29th** in the nation. In the past 12 months, the labor force participation rate has fallen by 0.2 percentage points.

Oklahoma
Unemployment Rate

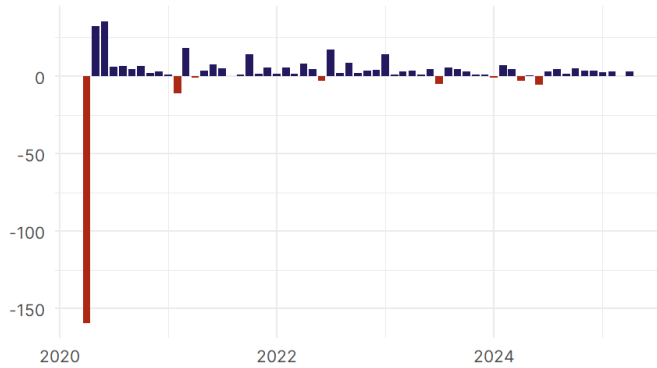


Source: Bureau of Labor Statistics, data is seasonally adjusted

Oklahoma Payroll Employment

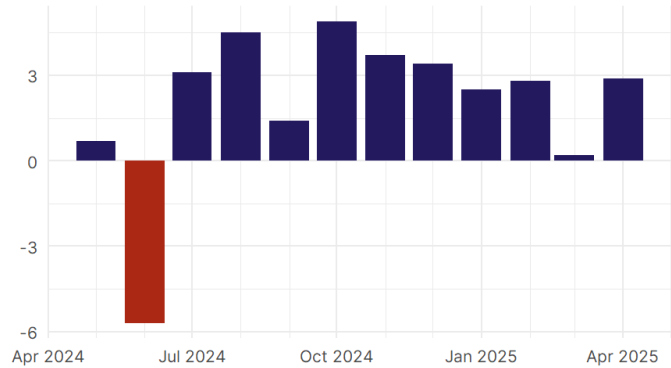
Oklahoma Nonfarm Payroll Jobs

Monthly change, past five years (thousands)



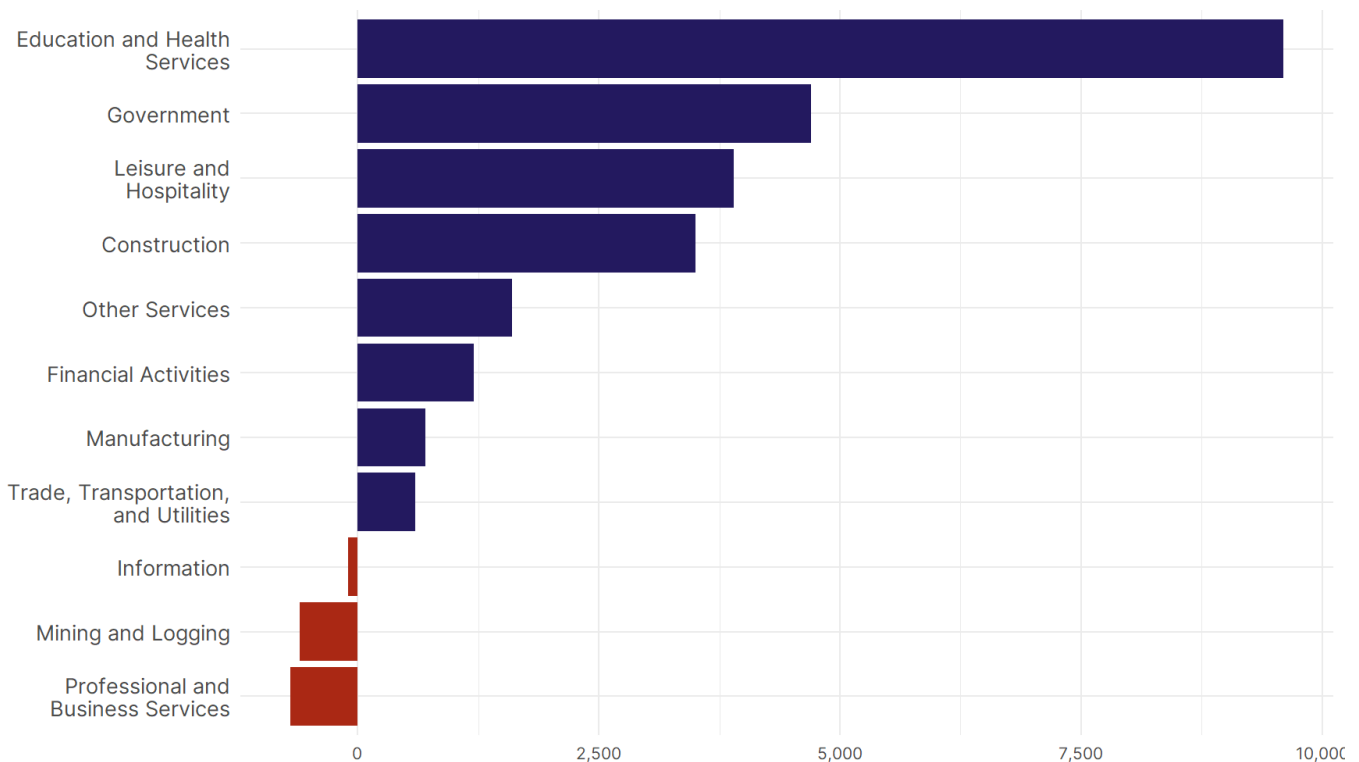
Oklahoma Nonfarm Payroll Jobs

Monthly change, past 12 months (thousands)



- **Oklahoma added 2,900 net payroll jobs, or 0.2 percent**, on a seasonally adjusted basis during April. In the prior month, Oklahoma added 200 jobs. Oklahoma nonfarm payroll employment has increased in **11 of the past 12 months**.
- Nationally, nonfarm payrolls **rose by 177,000 in April, or 0.1 percent**. Oklahoma is tied for 10th in the nation for percentage gain in nonfarm payroll employment over the past 12 months.
- **Oklahoma added 2,200 private sector jobs, or 0.2 percent**, on a seasonally adjusted basis during April. In the prior month, Oklahoma added 100 jobs. Oklahoma private sector payroll employment has increased in **10 of the past 12 months**.
- Nationally, private sector payroll jobs **rose by 167,000 jobs in April, or 0.1 percent**. Oklahoma is tied for 11th in the nation for percentage gain in private sector payroll employment over the past 12 months.

Change in Oklahoma Payroll Employment by Sector over past 12 months



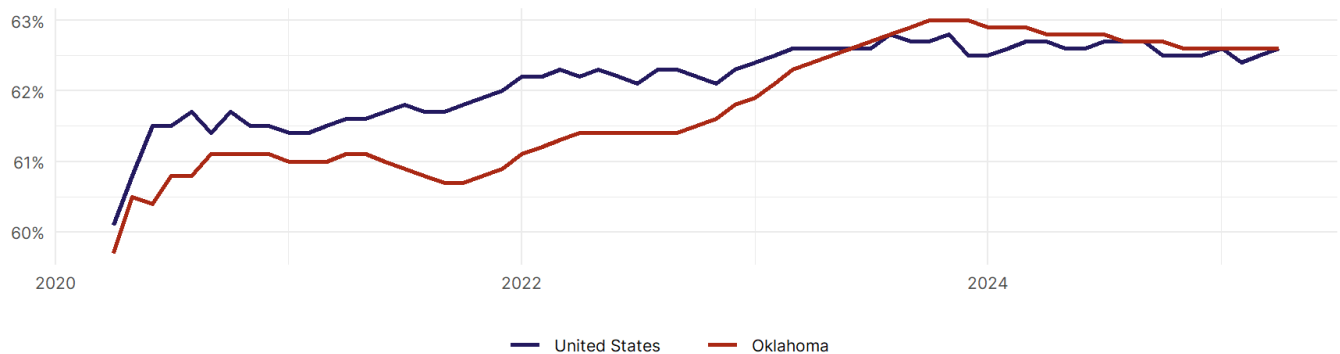
- The best performing sectors on a seasonally adjusted basis during April were **Professional and Business Services (1,800)** and **Manufacturing (1,100)**.
- The poorest performing sectors during the month were **Construction (-200)** and **Leisure and Hospitality (-1,800)**.
- The best performing sectors during the last 12 months were **Education and Health Services (9,600)** and **Government (4,700)**.
- The poorest performing sectors during the last 12 months were **Mining and Logging (-600)** and **Professional and Business Services (-700)**.

Oklahoma Labor Force

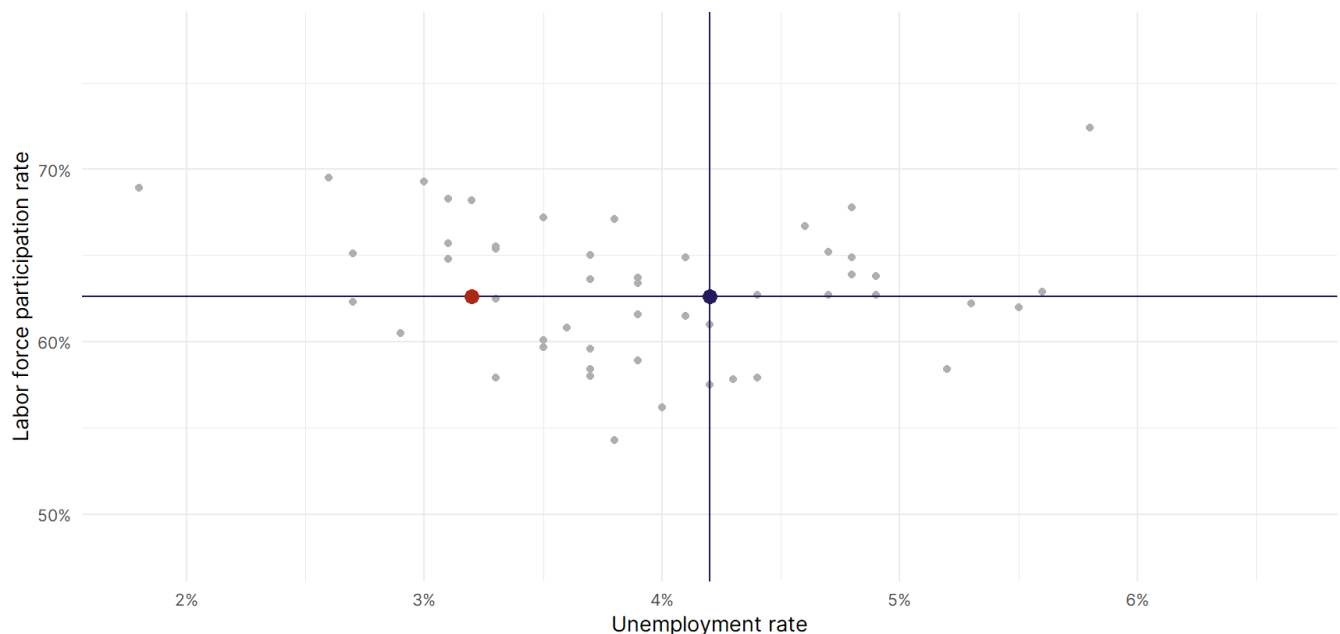
The labor force participation rate is the percentage of the civilian noninstitutionalized population age 16 and older who are employed or actively looking for work.

- The labor force participation rate in **Oklahoma remained unchanged at 62.6 percent in April**.
- **Oklahoma ranks 29th** in the nation.
- The 10-year high for the labor force participation rate in Oklahoma was **63 percent** occurring in December 2023, and the 10-year low was **59.7 percent** in April 2020.
- The national labor force participation rate **rose by 0.1 percentage points to 62.6 percent** in April.

Oklahoma
Labor Force Participation Rate



Source: Bureau of Labor Statistics, data is seasonally adjusted



Source: Bureau of Labor Statistics, data is seasonally adjusted