



United States Congress

Joint Economic Committee

Est. 1946

Republicans

Representative David Schweikert, *Chairman*



Oregon Employment Update



April 2025 | Released May 21, 2025

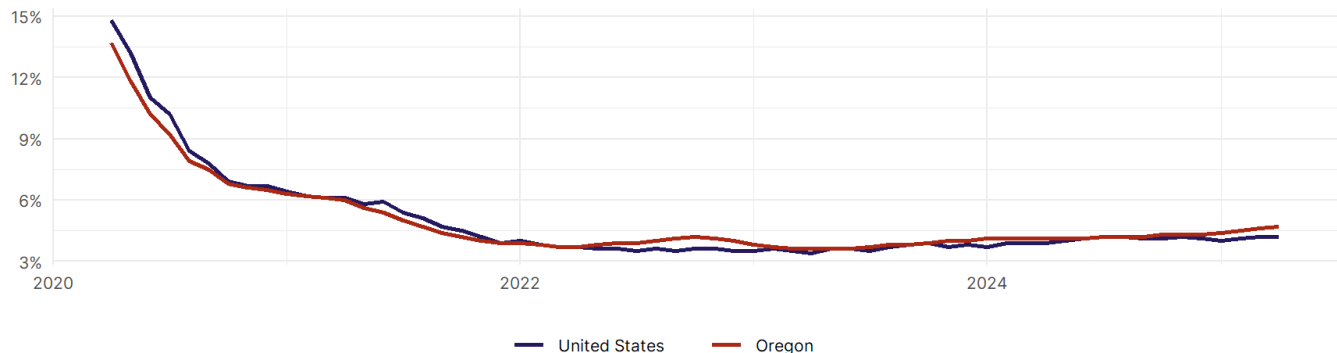
United States Employment Snapshot

- In April, among the 50 states and the District of Columbia **unemployment fell in 5, rose in 20, and remained unchanged in 26.**
- The highest unemployment rate was 5.8 percent in **District of Columbia**, and the lowest was 1.8 percent in **South Dakota**. Nationally, the unemployment rate remained unchanged in April.
- In April, **payroll jobs rose in 40 states and fell in 11.** The largest payroll job percent increase was 0.4 percent in **Mississippi**. The largest payroll job percent decline was 0.2 percent in **Vermont**.

Oregon Employment Snapshot

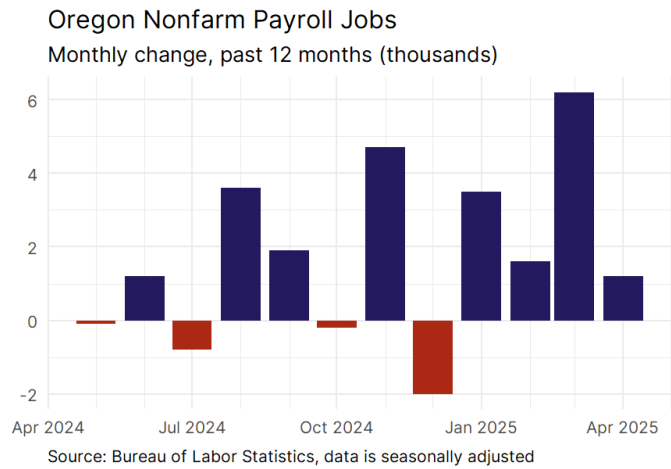
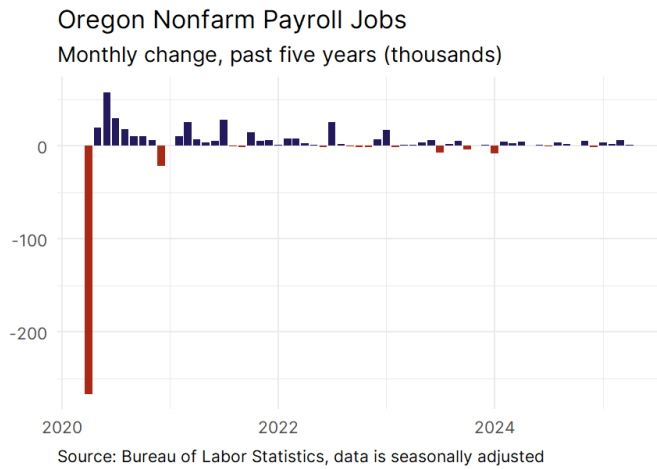
- In April, **Oregon added 1,200 net payroll jobs** and the **unemployment rate rose by 0.1 percentage point to 4.7 percent.** In the prior month, Oregon added 6,200 net payroll jobs.
- Over the past 12 months, **Oregon added 20,800 net payroll jobs** and the **unemployment rate rose by 0.6 percentage points from 4.1 percent.**
- Nationally, nonfarm payrolls **rose by 177,000 in April, or 0.1 percent.** Oregon **is tied for 23rd** in the nation for percentage gain in nonfarm payroll employment over the past 12 months.
- In April, **Oregon's private sector added 1,600 net private payroll jobs**, and over the past 12 months it added 14,300 private payroll jobs. In the prior month, Oregon added 6,400 net private payroll jobs.
- In April, employment in Oregon **fell by 1,337**, and over the past 12 months it rose by 2,268.
- **Oregon's labor force participation rate remained steady at 62.7 percent** in April and **is tied for 26th** in the nation. In the past 12 months, the labor force participation rate has risen by 0.1 percentage points.

Oregon
Unemployment Rate

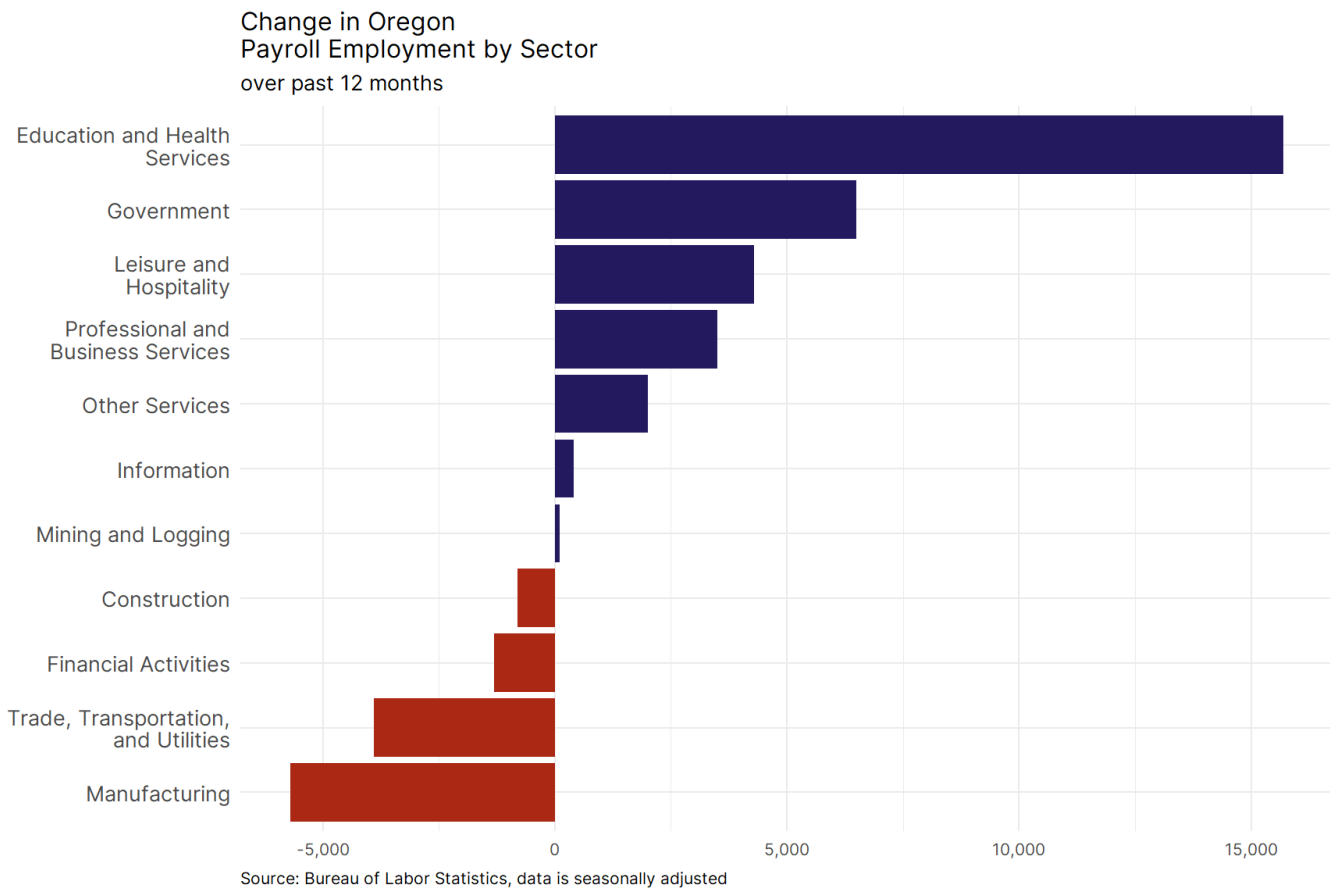


Source: Bureau of Labor Statistics, data is seasonally adjusted

Oregon Payroll Employment



- **Oregon added 1,200 net payroll jobs, or 0.1 percent,** on a seasonally adjusted basis during April. In the prior month, Oregon added 6,200 jobs. Oregon nonfarm payroll employment has increased in **8 of the past 12 months.**
- Nationally, nonfarm payrolls **rose by 177,000 in April, or 0.1 percent.** Oregon is tied for 23rd in the nation for percentage gain in nonfarm payroll employment over the past 12 months.
- **Oregon added 1,600 private sector jobs, or 0.1 percent,** on a seasonally adjusted basis during April. In the prior month, Oregon added 6,400 jobs. Oregon private sector payroll employment has increased in **7 of the past 12 months.**
- Nationally, private sector payroll jobs **rose by 167,000 jobs in April, or 0.1 percent.** Oregon is tied for 22nd in the nation for percentage gain in private sector payroll employment over the past 12 months.



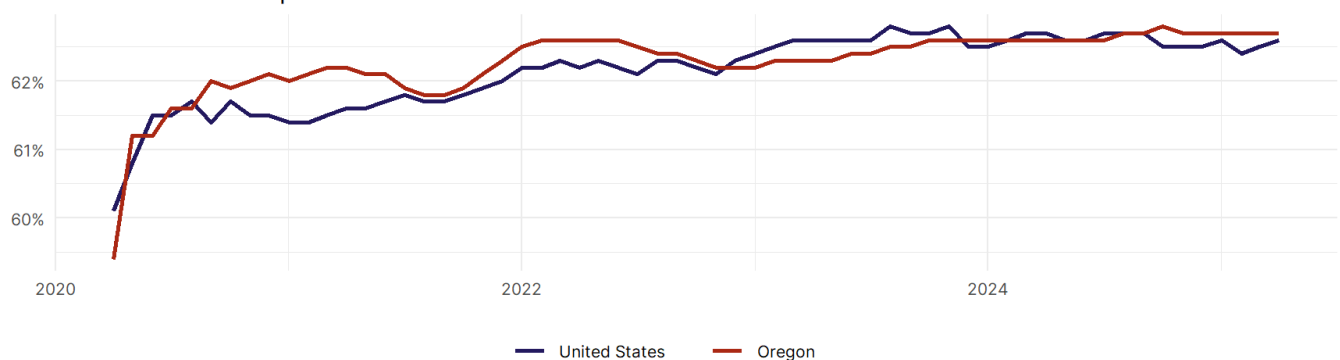
- The best performing sectors on a seasonally adjusted basis during April were **Leisure and Hospitality (3,300)** and **Professional and Business Services (900)**.
- The poorest performing sectors during the month were **Other Services (-600)** and **Trade, Transportation, and Utilities (-1,600)**.
- The best performing sectors during the last 12 months were **Education and Health Services (15,700)** and **Government (6,500)**.
- The poorest performing sectors during the last 12 months were **Trade, Transportation, and Utilities (-3,900)** and **Manufacturing (-5,700)**.

Oregon Labor Force

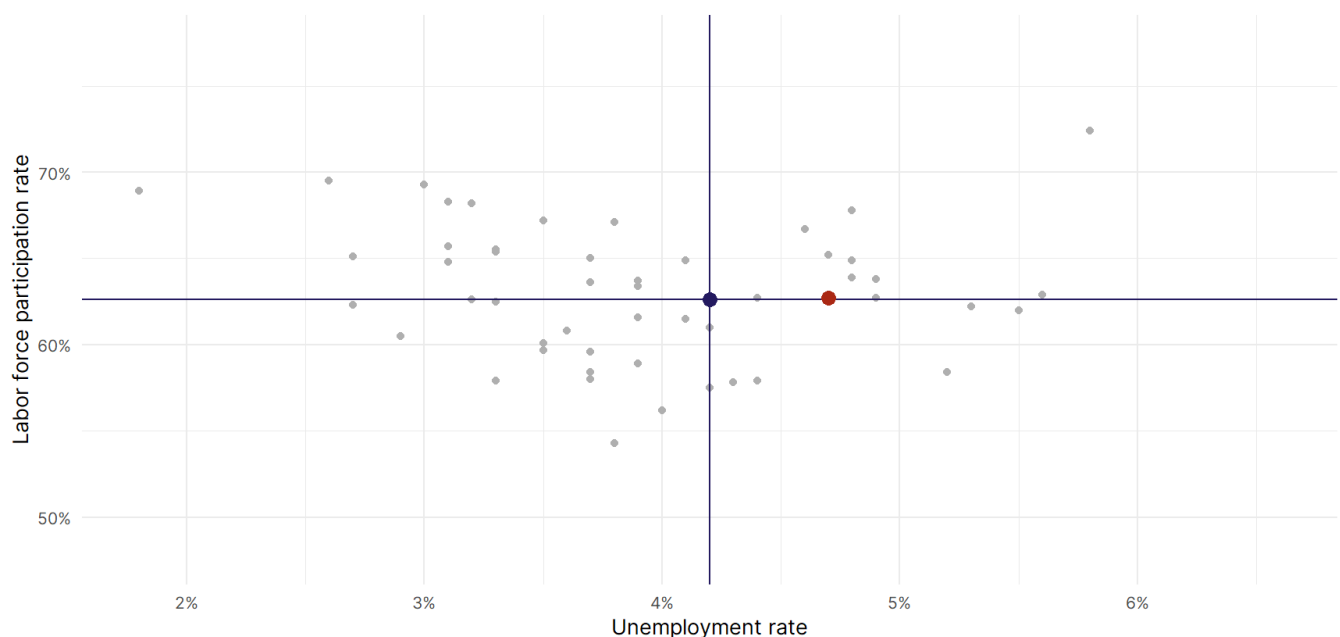
The labor force participation rate is the percentage of the civilian noninstitutionalized population age 16 and older who are employed or actively looking for work.

- The labor force participation rate in **Oregon remained unchanged at 62.7 percent in April**.
- **Oregon is tied for 26th** in the nation.
- The 10-year high for the labor force participation rate in Oregon was **62.8 percent** in October 2024, and the 10-year low was **59.4 percent** in April 2020.
- The national labor force participation rate **rose by 0.1 percentage points to 62.6 percent** in April.

Oregon
Labor Force Participation Rate



Source: Bureau of Labor Statistics, data is seasonally adjusted



Source: Bureau of Labor Statistics, data is seasonally adjusted