



United States Congress

# Joint Economic Committee

Est. 1946

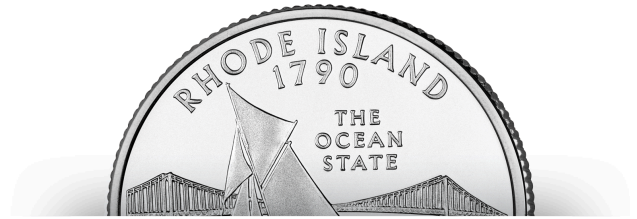
Republicans

Representative David Schweikert, *Chairman*



## Rhode Island

### Employment Update



April 2025 | Released May 21, 2025

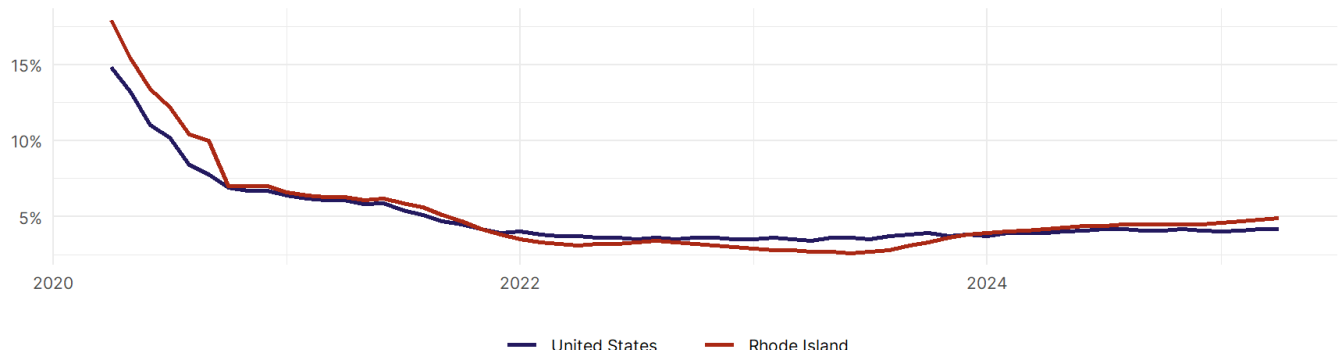
### United States Employment Snapshot

- In April, among the 50 states and the District of Columbia **unemployment fell in 5, rose in 20, and remained unchanged in 26**.
- The highest unemployment rate was 5.8 percent in **District of Columbia**, and the lowest was 1.8 percent in **South Dakota**. Nationally, the unemployment rate remained unchanged in April.
- In April, **payroll jobs rose in 40 states and fell in 11**. The largest payroll job percent increase was 0.4 percent in **Mississippi**. The largest payroll job percent decline was 0.2 percent in **Vermont**.

### Rhode Island Employment Snapshot

- In April, **Rhode Island added 300 net payroll jobs** and the **unemployment rate rose by 0.1 percentage point to 4.9 percent**. In the prior month, Rhode Island added 500 net payroll jobs.
- Over the past 12 months, **Rhode Island added 4,300 net payroll jobs** and the **unemployment rate rose by 0.7 percentage points from 4.2 percent**.
- Nationally, nonfarm payrolls **rose by 177,000 in April, or 0.1 percent**. Rhode Island **is tied for 27th** in the nation for percentage gain in nonfarm payroll employment over the past 12 months.
- In April, **Rhode Island's private sector added 100 net private payroll jobs**, and over the past 12 months it added 3,600 private payroll jobs. In the prior month, Rhode Island added 800 net private payroll jobs.
- In April, employment in Rhode Island **fell by 1,177**, and over the past 12 months it fell by 6,559.
- **Rhode Island's labor force participation rate fell to 63.8 percent** in April from 63.9 percent and **ranks 21st** in the nation. In the past 12 months, the labor force participation rate has fallen by 0.7 percentage points.

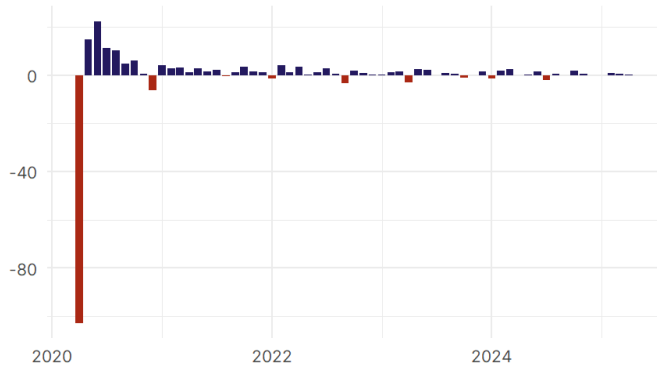
Rhode Island  
Unemployment Rate



Source: Bureau of Labor Statistics, data is seasonally adjusted

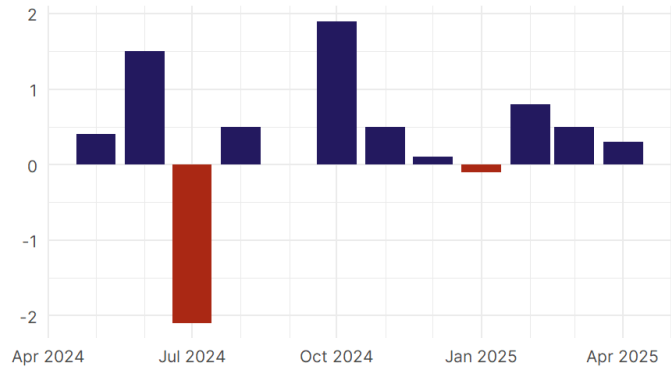
## Rhode Island Payroll Employment

Rhode Island Nonfarm Payroll Jobs  
Monthly change, past five years (thousands)



Source: Bureau of Labor Statistics, data is seasonally adjusted

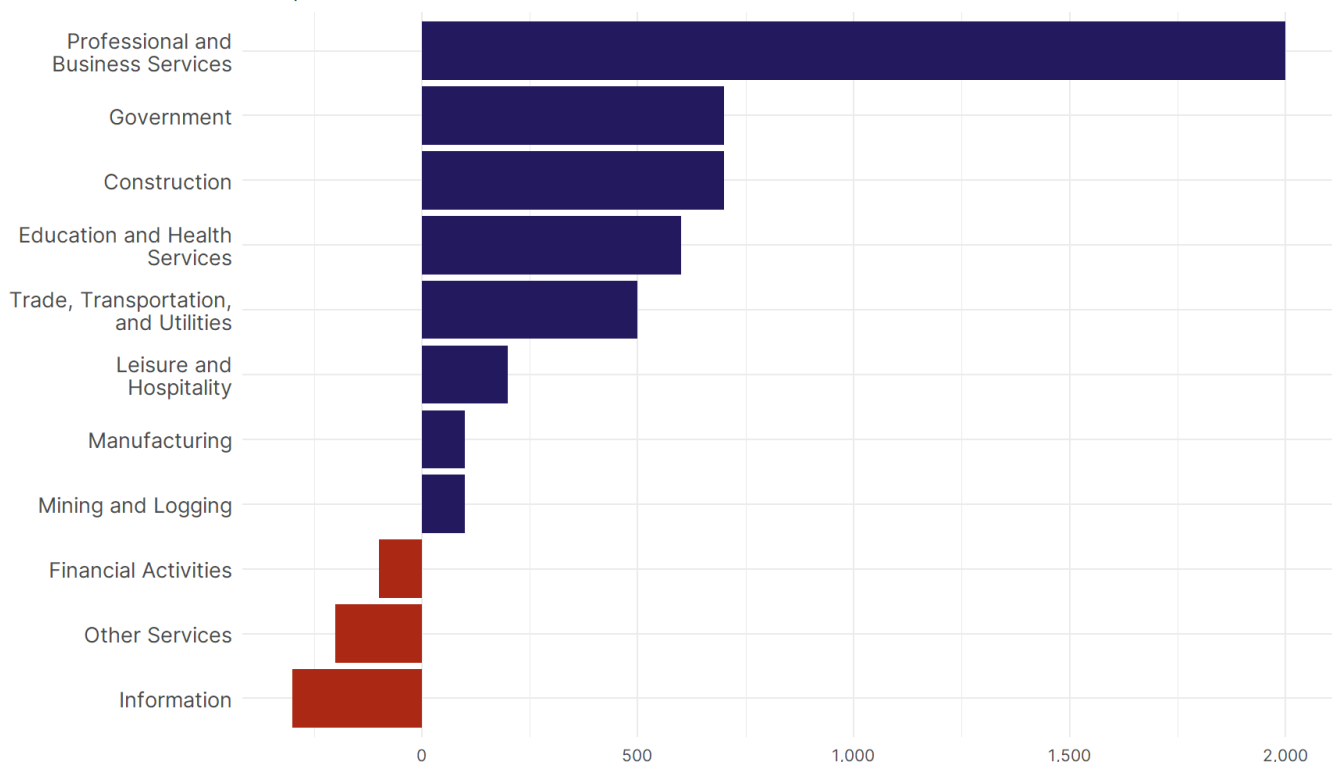
Rhode Island Nonfarm Payroll Jobs  
Monthly change, past 12 months (thousands)



Source: Bureau of Labor Statistics, data is seasonally adjusted

- **Rhode Island added 300 net payroll jobs, or 0.1 percent,** on a seasonally adjusted basis during April. In the prior month, Rhode Island added 500 jobs. Rhode Island nonfarm payroll employment has increased in **9 of the past 12 months**.
- Nationally, nonfarm payrolls **rose by 177,000 in April, or 0.1 percent**. Rhode Island is tied for 27th in the nation for percentage gain in nonfarm payroll employment over the past 12 months.
- **Rhode Island added 100 private sector jobs, or 0 percent,** on a seasonally adjusted basis during April. In the prior month, Rhode Island added 800 jobs. Rhode Island private sector payroll employment has increased in **9 of the past 12 months**.
- Nationally, private sector payroll jobs **rose by 167,000 jobs in April, or 0.1 percent**. Rhode Island is tied for 26th in the nation for percentage gain in private sector payroll employment over the past 12 months.

Change in Rhode Island  
Payroll Employment by Sector  
over past 12 months



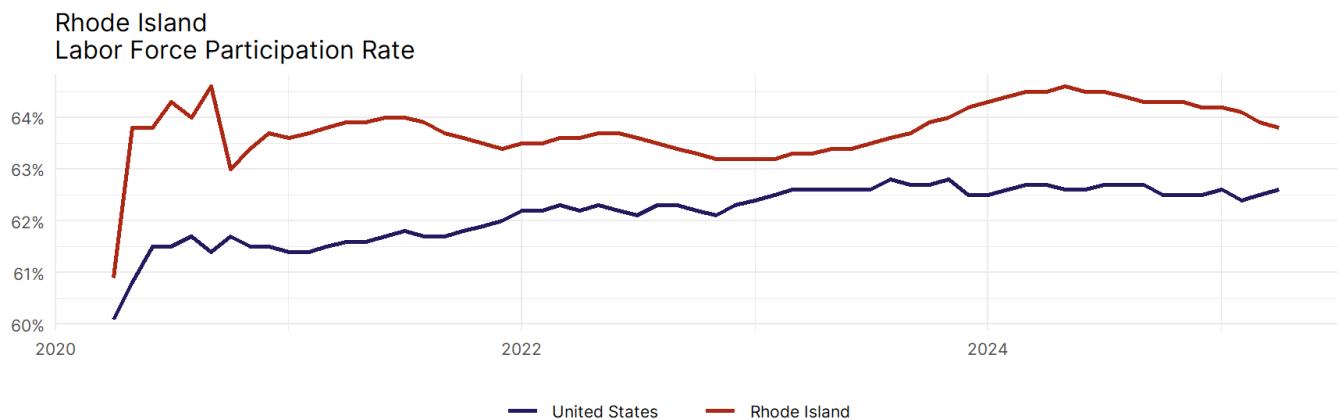
Source: Bureau of Labor Statistics, data is seasonally adjusted

- The best performing sectors on a seasonally adjusted basis during April were **Professional and Business Services (1,200)** and **Education and Health Services (600)**.
- The poorest performing sectors during the month were **Construction (-400)** and **Leisure and Hospitality (-700)**.
- The best performing sectors during the last 12 months were **Professional and Business Services (2,000)** and **Government (700)**.
- The poorest performing sectors during the last 12 months were **Other Services (-200)** and **Information (-300)**.

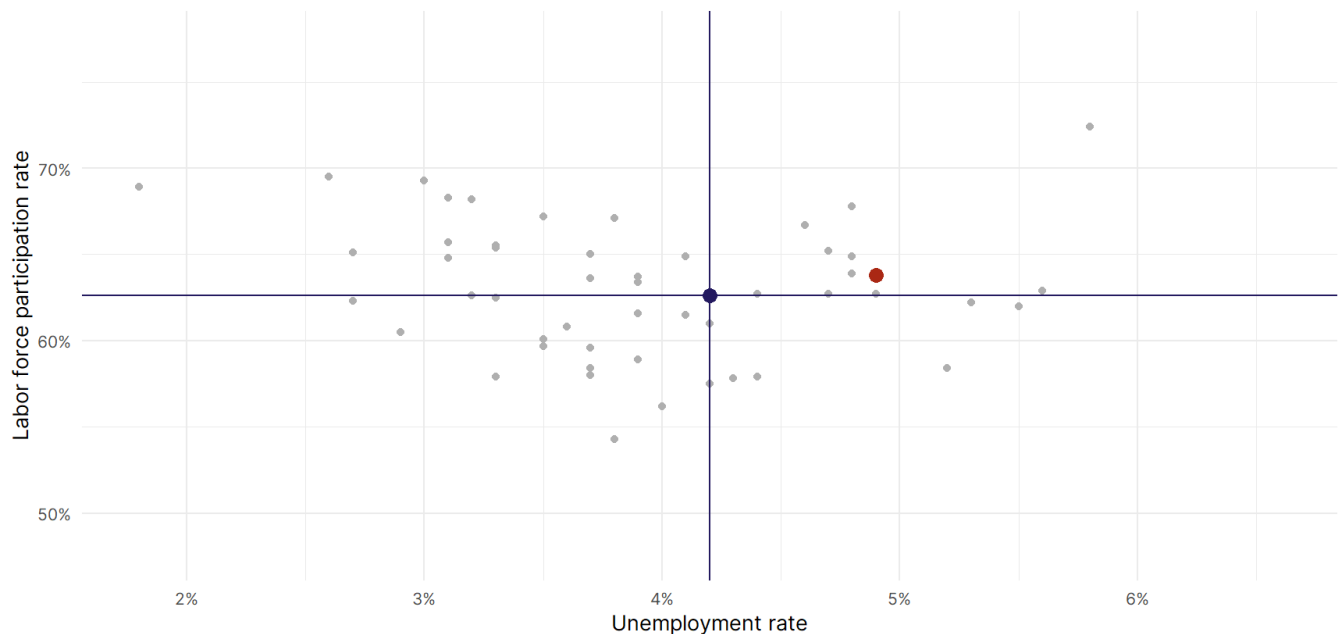
### Rhode Island Labor Force

The labor force participation rate is the percentage of the civilian noninstitutionalized population age 16 and older who are employed or actively looking for work.

- The labor force participation rate in **Rhode Island fell to 63.8 percent in April from 63.9 percent in the prior month.**
- **Rhode Island ranks 21st** in the nation.
- The 10-year high for the labor force participation rate in Rhode Island was **65.1 percent** in April 2015, and the 10-year low was **60.9 percent** in April 2020.
- The national labor force participation rate **rose by 0.1 percentage points to 62.6 percent** in April.



Source: Bureau of Labor Statistics, data is seasonally adjusted



Source: Bureau of Labor Statistics, data is seasonally adjusted