



United States Congress

Joint Economic Committee

Est. 1946

Republicans

Representative David Schweikert, *Chairman*



Tennessee

Employment Update



April 2025 | Released May 21, 2025

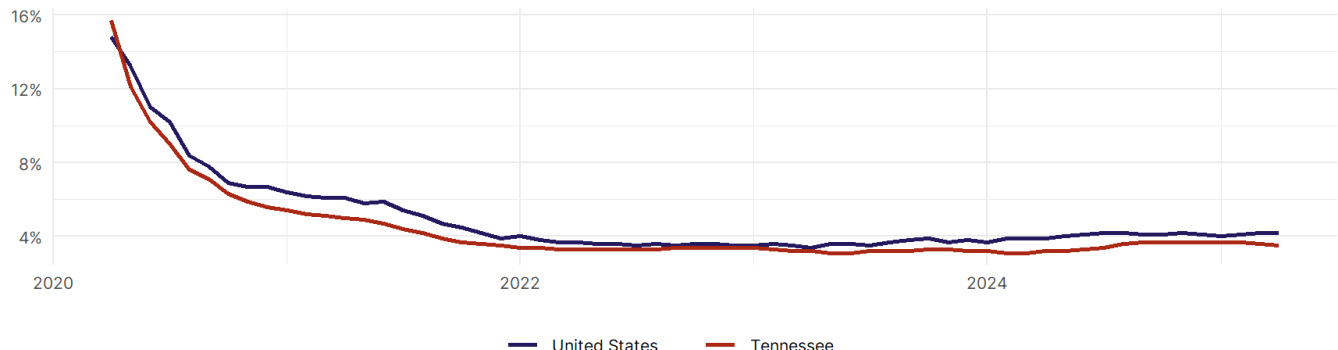
United States Employment Snapshot

- In April, among the 50 states and the District of Columbia **unemployment fell in 5, rose in 20, and remained unchanged in 26.**
- The highest unemployment rate was 5.8 percent in **District of Columbia**, and the lowest was 1.8 percent in **South Dakota**. Nationally, the unemployment rate remained unchanged in April.
- In April, **payroll jobs rose in 40 states and fell in 11.** The largest payroll job percent increase was 0.4 percent in **Mississippi**. The largest payroll job percent decline was 0.2 percent in **Vermont**.

Tennessee Employment Snapshot

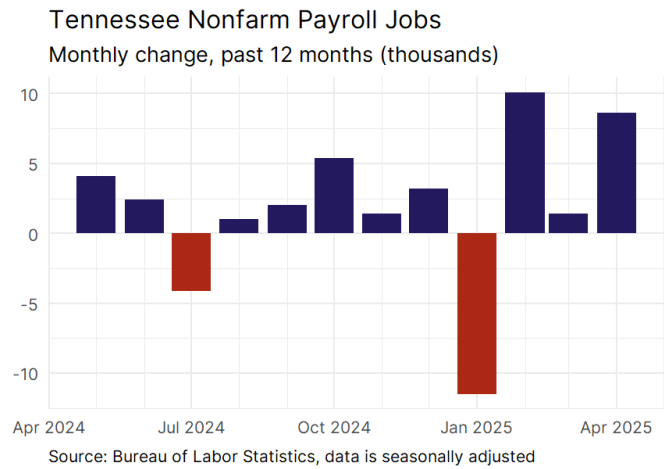
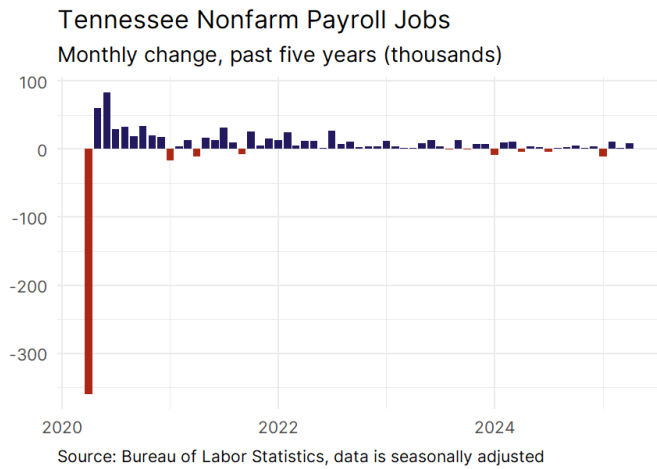
- In April, **Tennessee added 8,600 net payroll jobs** and the **unemployment rate fell by 0.1 percentage point to 3.5 percent.** In the prior month, Tennessee added 1,400 net payroll jobs.
- Over the past 12 months, **Tennessee added 24,000 net payroll jobs** and the **unemployment rate rose by 0.3 percentage points from 3.2 percent.**
- Nationally, nonfarm payrolls **rose by 177,000 in April, or 0.1 percent.** Tennessee **is tied for 35th** in the nation for percentage gain in nonfarm payroll employment over the past 12 months.
- In April, **Tennessee's private sector added 8,300 net private payroll jobs**, and over the past 12 months it added 15,000 private payroll jobs. In the prior month, Tennessee added 500 net private payroll jobs.
- In April, employment in Tennessee **rose by 12,741**, and over the past 12 months it rose by 33,443.
- **Tennessee's labor force participation rate rose to 59.7 percent** in April from 59.6 percent and **ranks 40th** in the nation. In the past 12 months, the labor force participation rate has risen by 0.1 percentage points.

Tennessee
Unemployment Rate

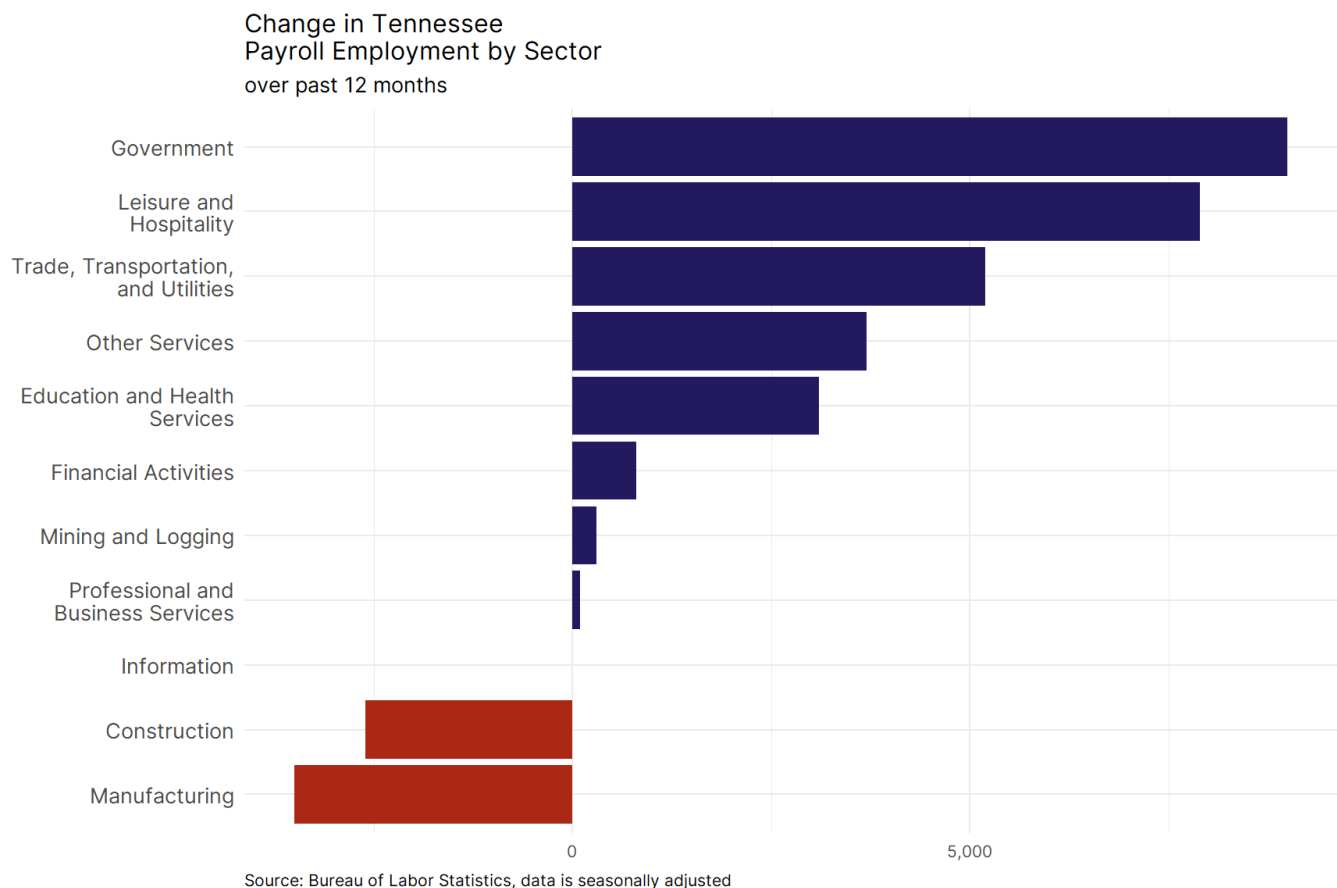


Source: Bureau of Labor Statistics, data is seasonally adjusted

Tennessee Payroll Employment



- **Tennessee added 8,600 net payroll jobs, or 0.3 percent**, on a seasonally adjusted basis during April. In the prior month, Tennessee added 1,400 jobs. Tennessee nonfarm payroll employment has increased in **10 of the past 12 months**.
- Nationally, nonfarm payrolls **rose by 177,000 in April, or 0.1 percent**. Tennessee is tied for 35th in the nation for percentage gain in nonfarm payroll employment over the past 12 months.
- **Tennessee added 8,300 private sector jobs, or 0.3 percent**, on a seasonally adjusted basis during April. In the prior month, Tennessee added 500 jobs. Tennessee private sector payroll employment has increased in **10 of the past 12 months**.
- Nationally, private sector payroll jobs **rose by 167,000 jobs in April, or 0.1 percent**. Tennessee is tied for 37th in the nation for percentage gain in private sector payroll employment over the past 12 months.

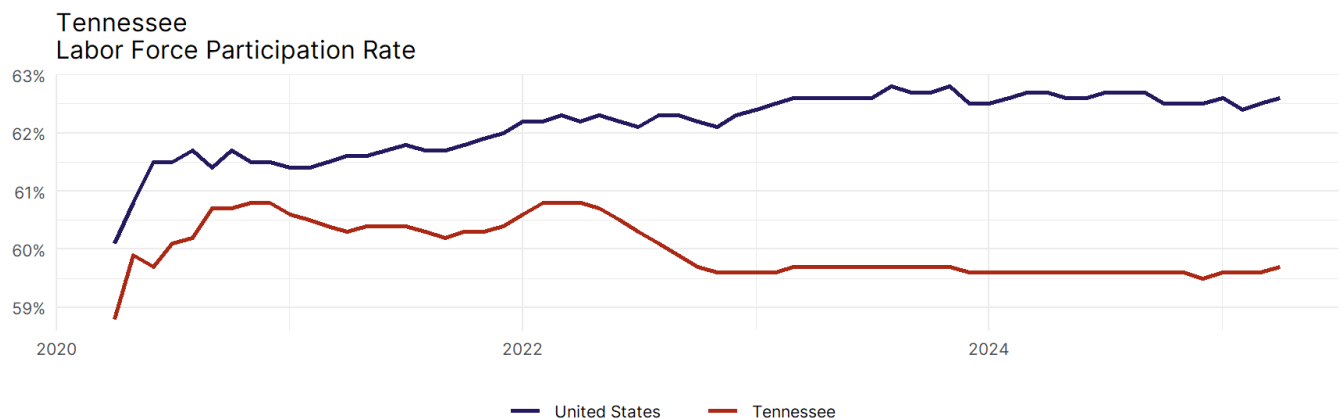


- The best performing sectors on a seasonally adjusted basis during April were **Trade, Transportation, and Utilities tied with Professional and Business Services (3,000)** and **Leisure and Hospitality (1,900)**.
- The poorest performing sectors during the month were **Construction (-1,300)** and **Manufacturing (-1,400)**.
- The best performing sectors during the last 12 months were **Government (9,000)** and **Leisure and Hospitality (7,900)**.
- The poorest performing sectors during the last 12 months were **Construction (-2,600)** and **Manufacturing (-3,500)**.

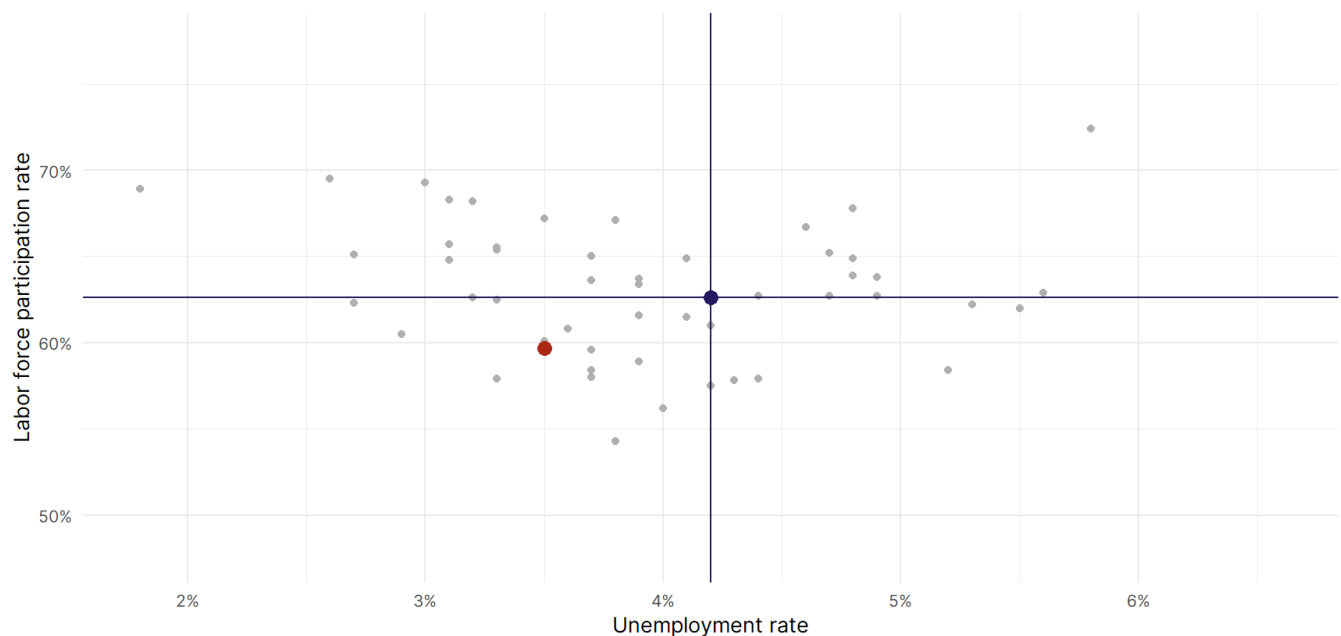
Tennessee Labor Force

The labor force participation rate is the percentage of the civilian noninstitutionalized population age 16 and older who are employed or actively looking for work.

- The labor force participation rate in **Tennessee rose to 59.7 percent in April from 59.6 percent in the prior month**.
- **Tennessee ranks 40th** in the nation.
- The 10-year high for the labor force participation rate in Tennessee was **61.9 percent** occurring in November 2019, and the 10-year low was **58.8 percent** in April 2020.
- The national labor force participation rate **rose by 0.1 percentage points to 62.6 percent** in April.



Source: Bureau of Labor Statistics, data is seasonally adjusted



Source: Bureau of Labor Statistics, data is seasonally adjusted