



United States Congress

Joint Economic Committee

Est. 1946

Republicans

Representative David Schweikert, *Vice Chairman*



Alabama

Inflation Update



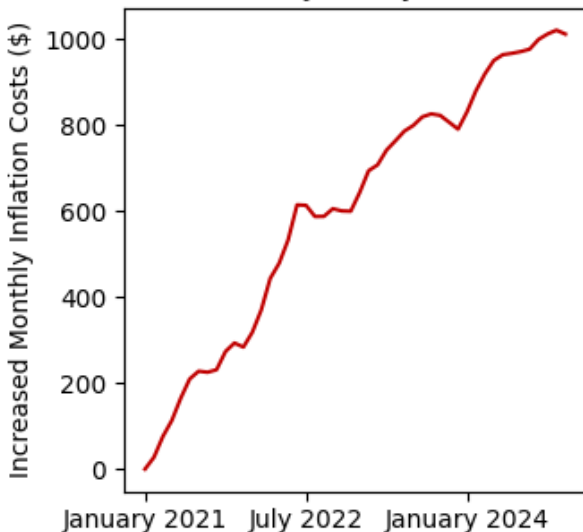
December 2024

Summary

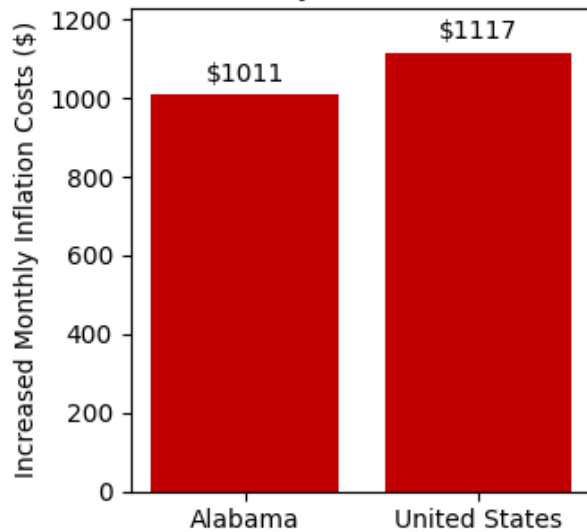
Using the **December 2024** [Consumer Price Index](#) data release by the Bureau of Labor Statistics, the Joint Economic Committee (JEC) [State Inflation Tracker](#) estimates that the average household in **Alabama** is paying **\$1,011** more per month to purchase the same basket of goods and services as in January 2021.

Cumulatively, the average **Alabama** household has spent **\$29,164** more due to inflation since January 2021.

Increased Monthly Inflation Costs Since January 2021



Alabama ranks 36th for Increased Monthly Inflation Costs



Breakdown

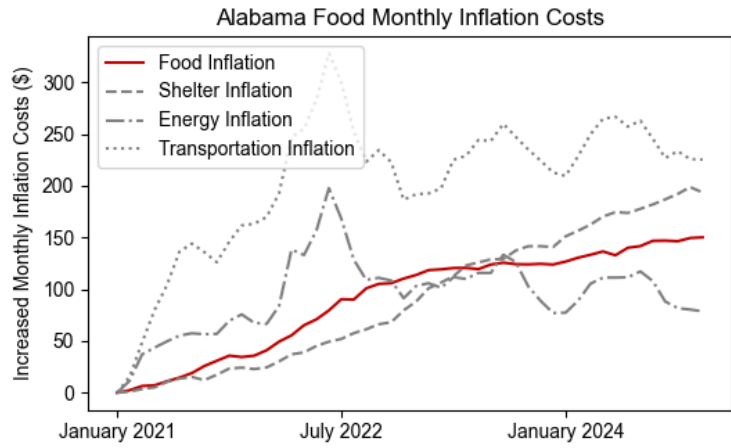
The Census Division where **Alabama** is located has seen cumulative inflation of **22.1 percent** since January 2021. This is **1.4 percentage points higher** than the national cumulative inflation since January 2021 of **20.7 percent**.

Compared to one year earlier, the average **Alabama** households needs to spend **\$221** more per month to maintain the same standard of living.

The JEC Inflation Tracker breaks down the increased cost to the average household in **Alabama** relative to January 2021 into four essential spending categories below:

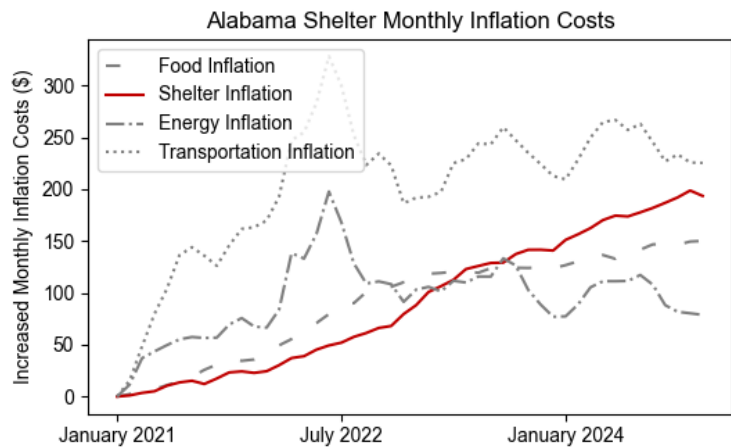
Household Food Expenses

Compared to January 2021, the average household in **Alabama** is spending **\$150** more on food per month. This is **\$26 more** each month than one year ago. Cumulatively, the average household in **Alabama** has spent **\$4,325** more on food due to inflation since January 2021.



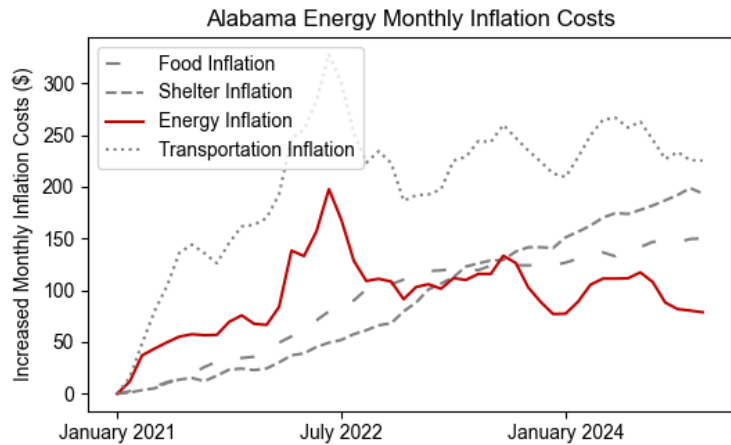
Household Shelter Expenses

Compared to January 2021, the average household in **Alabama** is spending **\$193** more on shelter per month. This is **\$53 more** each month than one year ago. Cumulatively, the average household in **Alabama** has spent **\$4,353** more on shelter due to inflation since January 2021.



Household Energy Expenses

Compared to January 2021, the average household in **Alabama** is spending **\$79** more on energy per month. This is **\$2 more** each month than one year ago. Cumulatively, the average household in **Alabama** has spent **\$4,523** more on energy due to inflation since January 2021.



Household Transportation Expenses

Compared to January 2021, the average household in **Alabama** is spending **\$225** more on transportation per month. This is **\$13 more** each month than one year ago. Cumulatively, the average household in **Alabama** has spent **\$9,753** more on transportation due to inflation since January 2021.

